

HÔTEL
SALOMON DE ROTHSCHILD

PARIS



PARIS SOCIETY
EVENTS





HÔTEL SALOMON DE ROTHSCHILD
PICTURESQUE AND PRESTIGIOUS

*If the history of Paris is full of charm,
the Hôtel Salomon de Rothschild is its embodiment*

Marked by its Haussmannian architecture, this 19th-century residence is much more than a mere relic of the past - it is a witness to an era when art, culture and society mingled in harmonious ballet. Baroness Adèle, as the former mistress of the house was known, mastered the art of entertaining and delighting her guests. Now listed as *Monuments Historiques*, its walls perpetuate this tradition of excellence and host a multitude of prestigious events.

HÔTEL SALOMON DE ROTHSCHILD

Set in a green setting, this private mansion comprises three hushed, grandiose floors that skilfully combine the architecture of the past with contemporary comfort.

Its vast salons are filled with the murmurs of visitors over the centuries. The majestic fireplaces are the imprint of lively stories and convivial exchanges around the fire. Behind each wood-panelled door, a space is revealed, ideal for upscale receptions of any scale.

TOTAL SURFACES:

Indoor: 800 m²

Outdoor: 4 540 m²

EQUIPMENTS:

Sound and light system

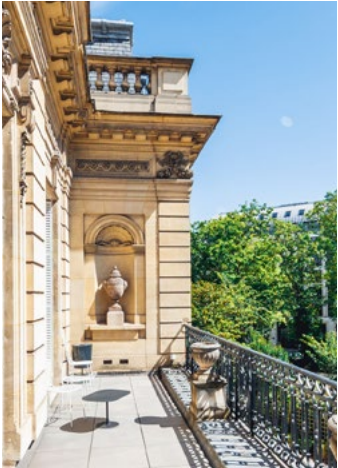
WIFI



YOUR EVENT AT THE HÔTEL SALOMON DE ROTHSCHILD



PARIS SOCIETY EVENTS



PRESENTATION BOOKLET



Sumptuous dinners at
BARONNE



GROUND LEVEL

BARONNE

—

More than just a restaurant, it's an ode to refinement. Orchestrated by Corinne Sachot, the different salons with their majestic volumes are a skilful blend memory and modernity.

The furniture, fabrics, prints and lighting invite you to join this living canvas, where every corner tells a story.

Find out more: [here](#)

SURFACES:

Atrium: 85m²

Petit Salon: 66m²

Salon d'Honneur: 113m²

Bar: 70m²

Garden: 350m²

CAPACITIES:

Seated meal

Atrium: 34 guests

Petit Salon: 32 guests

Salon d'Honneur: 64 guests

Bar: 44 guests

Garden: 170 guests

Cocktail reception

300 guests

**On total privatization of the Hôtel Salomon de Rothschild only*



Prestigious event on the

1ST FLOOR

1ST FLOOR
THE ORATORY



Once a place of prayer, this pure room with its delicately emerald-tinted walls is illuminated by the light from outside. With a breathtaking view over the park, it inspires calm and privacy, creating unique moments of encounter.

SURFACE:

95 m²

CAPACITIES:

Cocktail reception: 130 guests

Conference: 90 guests

Seated meal: 70 guests



1ST FLOOR**THE BILLARDS ROOM**

This central living space features elegant, refined architecture. On one side, large wall mirrors embellish the wall, reflecting light and creating elegant perspectives. On the other, picture windows open onto a small terrace with an overhanging view.

SURFACE:63 m²**CAPACITIES:**

Cocktail reception: 60 guests

Conference: 40 guests

Seated meal: 50 guests

1ST FLOOR

THE HÉLÈNE BEDROOM

—

The different orientations of the parquet floor are remnants of the organization of the bedroom, anteroom and bathroom of the Baroness's only daughter, Hélène.

Now renovated, this room delicately blends modern equipment with period details, leaving plenty of room for your creativity.

SURFACE:

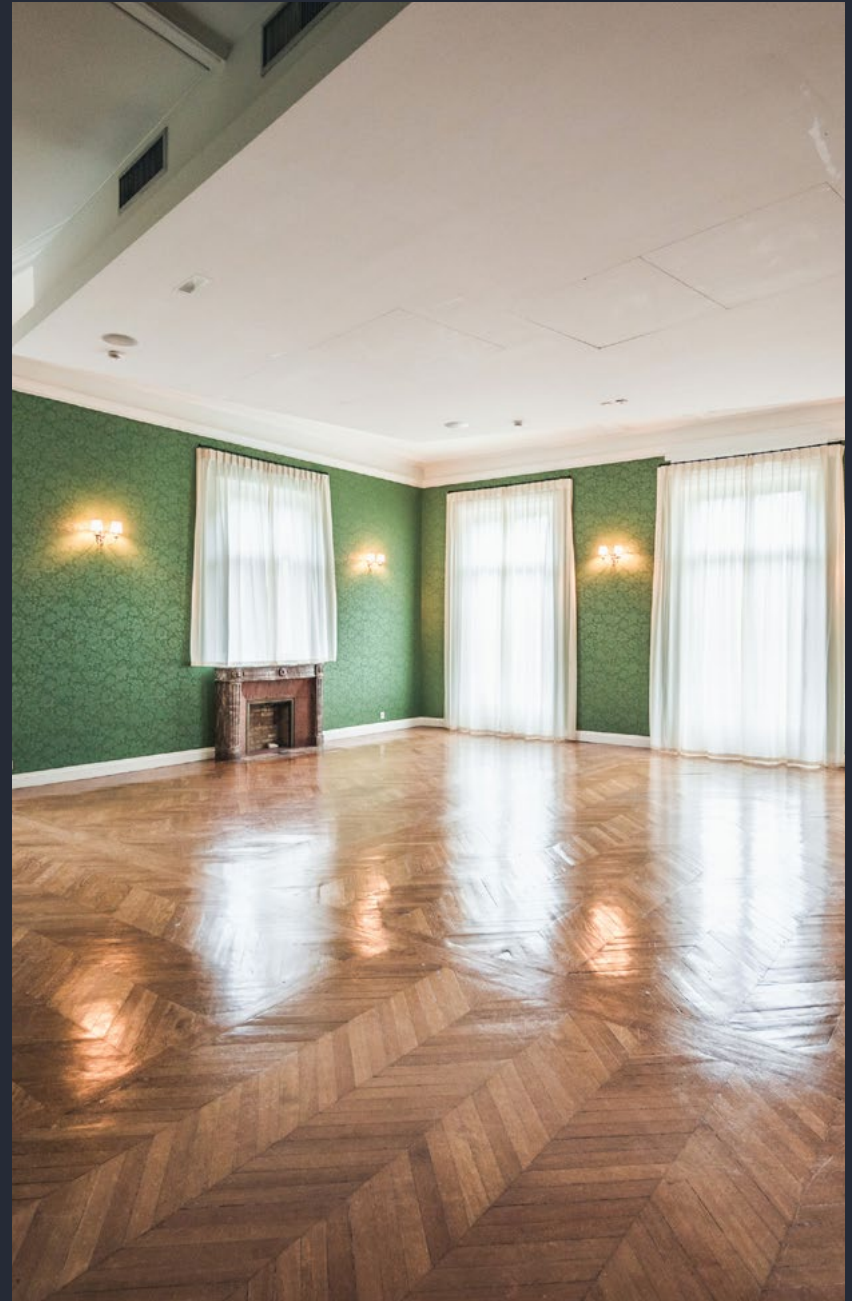
117 m²

CAPACITIES:

Cocktail reception: 150 guests

Conference: 114 guests

Seated meal: 80 guests





Surprising events in
THE BALLROOM



BASEMENT

THE BALLROOM

Hidden away in the basement of the Hôtel particulier is a space of unsuspected size and technology. Over 480m² are fully equipped to host and adapt to all event formats, from large-scale conferences to the most festive evenings.

SURFACE:

486 m²

CAPACITIES:

Cocktail reception: 490 guests

Conference: 400 guests

Seated meal: 350 guests

EQUIPMENTS:

Sound and light system

1 stage 8×3m, 6 arches, 1 screen 8×4,5, 2 PC, 2 screens 43"...



A verdant interlude in
THE GREEN SPACES

OUTDOOR
THE DEER GARDEN

This garden was the last home of Honoré de Balzac, as evidenced by the rotunda erected in his memory by Baroness Adèle.

This expanse of greenery features reliefs, shades, columns and elegant sculptures. It's the ideal setting for garden parties or outdoor dining events.

SURFACE:

360 m²

CAPACITY:

200 guests





OUTDOOR
THE FOUNDATION PARK

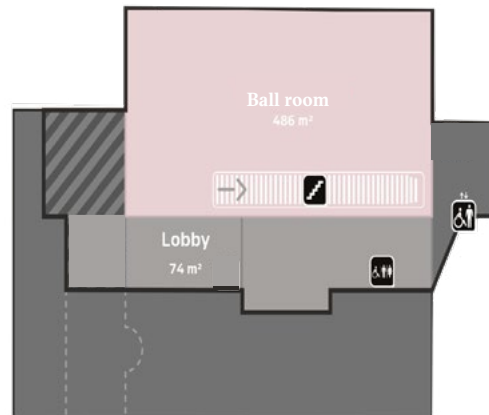
A narrow staircase leads up to the park, revealing a breathtaking view of the entire property.

The expanse of fresh grasses, the tall majestic trees and the delicate breeze caressing the foliage welcome your guests into an elegant and generous setting. In this lush setting, your special events will create lasting memories.

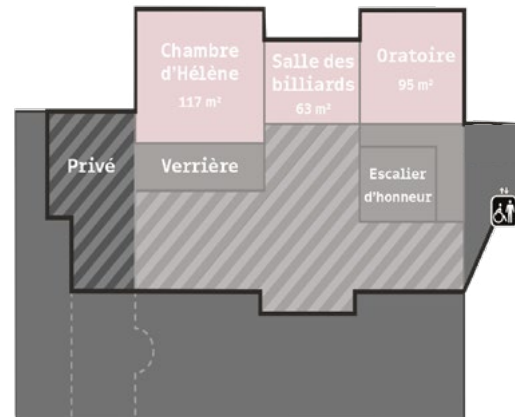
SURFACE:
3 900 m²

Subject to prior authorization - Public domain

Basement



1st floor



VENUE PLAN



ACCESS

—

ADDRESS

11, rue Berryer - 75008 Paris

TRANSPORTS

Metro: Line 1 - Stop George V (6 min on foot)

Lines 1, 2 & 6 - Stop Charles de Gaulle - Étoile (7 min on foot)

Bus : Lines 22, 43, 52, 83 & 93- Stop Friedland - Haussmann
(6 min on foot)

Velib : Station 8053 - Stop Place Georges Guillaumin (1 min on foot)

PARKING

Parking Zenpark - 25 Avenue de Friedland (4 min on foot)

GPS COORDINATES

48.875023, 2.302648



CONTACT



01 45 26 04 58

evenements@paris-society.com



PARIS SOCIETY
EVENTS