

# ORGANISER'S GUIDE



2023



**PARIS**  
EXPO  
PORTE DE VERSAILLES

# Editorial



**Vincent FELLMANN,**  
Site Director  
Paris Expo Porte de Versailles

**W**elcome to Paris Expo Porte de Versailles - an exceptional site just 15 minutes away from the Eiffel Tower!

Paris Expo Porte de Versailles is an internationally renowned venue where each event is given maximum visibility to make sure it really stands out.

The site has over 210,000 sqm of exhibition space, housed in 7 pavilions, including a vast 51,000 sqm space and a plenary hall that can seat 5,200 guests. Pavilion 6, which opened in late 2019, is a breathtaking contemporary building whose green roof is fully in line with Viparis's CSR commitments.

The recently-inaugurated Mama Shelter and Novotel hotels, combined with Le Perchoir, our rooftop bar and restaurant, make this exhibition complex a unique destination in Europe.

The international crises we are experiencing are having an impact on energy costs, as they are everywhere. Viparis has assumed the additional costs in 2022, but is obliged to impact part of these increases on its rates in 2023. We will work with you as the earliest to make events more energy-efficient in the interests of economy and ecology.

We will do everything we can to make your guests' visit an unforgettable experience. The entire Paris Expo Porte de Versailles team is delighted to welcome you and will put its expertise into making your event a success.

This guide will provide you with everything you need for a stress-free event. In its pages, you'll find details about our various spaces, services and rates, along with useful information and much more.

Our Project Managers are standing by, ready to assist you. This guide will help you make the most of Paris Expo Porte de Versailles.

Enjoy your reading !

A handwritten signature in blue ink, appearing to read 'V. Fellmann', with a long, sweeping underline.

Information about ongoing works is available at  
[www.renovation-portedeversailles.com](http://www.renovation-portedeversailles.com)

# Your contacts in operation management

**SITE DIRECTOR**

Vincent FELLMANN  
+33 (0)6 30 26 13 74  
vincent.fellmann@viparis.com

**DEPUTY SITE DIRECTOR**

Inès DELACOUR  
+33 (0)6 25 61 01 77  
ines.delacour@viparis.com

**CONGRESS AND INTERNATIONAL  
EVENTS DIRECTOR**

Julien BONNE  
+33 (0)6 09 47 05 96  
julien.bonne@viparis.com

**EXECUTIVE ASSISTANT**

Stéphanie NATTIER  
+33 (0)7 60 02 37 40  
stephanie.nattier@viparis.com

**PROJECT MANAGERS**

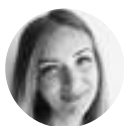
Léa AUBRY  
+33 (0)6 16 02 84 95  
lea.aubry@viparis.com



Christelle FASCIONE  
+33 (0)6 15 83 35 87  
christelle.fascione@viparis.com



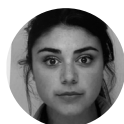
Jean-Baptiste BAUSCH  
+33 (0)6 22 15 23 13  
jeanbaptiste.bausch@viparis.com



Anne LE DEUN  
+33 (0)6 59 86 93 23  
anne.ledeun@viparis.com



Jennyfer BLATY  
+33 (0)6 13 63 47 42  
jennyfer.blaty@viparis.com



Juliette MENENDEZ  
+33 (0)7 60 02 36 43  
juliette.menendez@viparis.com



Gaëlla BONNEL  
+33 (0)763 73 66 71  
gaella.bonnel@viparis.com



Maëlle MUGNIER  
+33 (0)7 60 86 64 02  
maelle.mugnier@viparis.com



Mohammed DJELLOULI  
+33 (0)6 23 06 93 25  
mohammed.djellouli@viparis.com



Mélanie SININGE  
+33 (0)6 25 18 53 33  
melanie.sininge@viparis.com

# Contents



## WELCOME TO PARIS EXPO PORTE DE VERSAILLES

Introduction	06
Planning your first event	15



## PRACTICAL INFORMATION

On-site facilities	45
Nearby facilities	48



## A FULL RANGE OF SERVICES FOR YOUR EVENT

Types of services	18
What's included in your hire agreement ?	19
Included services	22
Exclusive mandatory services	23
Exclusive optional services	24
Optional services	40



## REFERENCES AND RATES

Exclusive mandatory services	52
Exclusive optional services	53



# Welcome to Paris Expo Porte de Versailles

## INTRODUCTION

06

A few facts and figures  
Viparis Store  
Exhibitor Department  
Viparis's approach to quality  
Viparis and Corporate Social Responsibility  
Site map  
On-site facilities

## PLANNING YOUR FIRST EVENT

15

Key points  
Essential steps

1

# INTRODUCTION

## A few facts and figures

### PARIS EXPO PORTE DE VERSAILLES, A UNIQUE SITE

- ◆ A world-renowned and historic venue that is number one in Europe in terms of number of events
- ◆ An international meeting-place that is a cornerstone of Parisian life
- ◆ The capital's most prestigious events
- ◆ Easy to access from multiple means of transport

### A DYNAMIC AND VERSATILE SITE

**212,545 sqm**  
OF EXHIBITION SPACE  
IN PARIS

MORE THAN **7.5 MILLIONS**  
VISITORS

**200** EVENTS  
THROUGHOUT THE YEAR

**72,000 sqm**  
OF GREEN SPACES

**7** PAVILIONS

A **72,000 sqm**  
CONFERENCE CENTRE AND  
A PLENARY HALL THAT SEATS  
**5,200**

**47** CONFERENCE ROOMS

**€500** MILLION  
IN INVESTMENTS BY  
**2027**

Information about ongoing works is available  
at [www.renovation-portedeversailles.com](http://www.renovation-portedeversailles.com)

# A few facts and figures

## AN ACCESSIBLE SITE WITH EVERYTHING YOU NEED



### A WIDE RANGE OF ACCOMMODATION

...more than twenty 3- and 4-star hotels nearby.  
since 2019, Paris Expo Porte de Versailles has opened two unique concept hotels: a 205-room Mama Shelter and a 245-room Novotel.



### A FIRST-CLASS TEAM

...an experienced, proactive and motivated team to help you throughout the process, providing advice and ensuring that everything is precisely installed so that your event is a complete success.



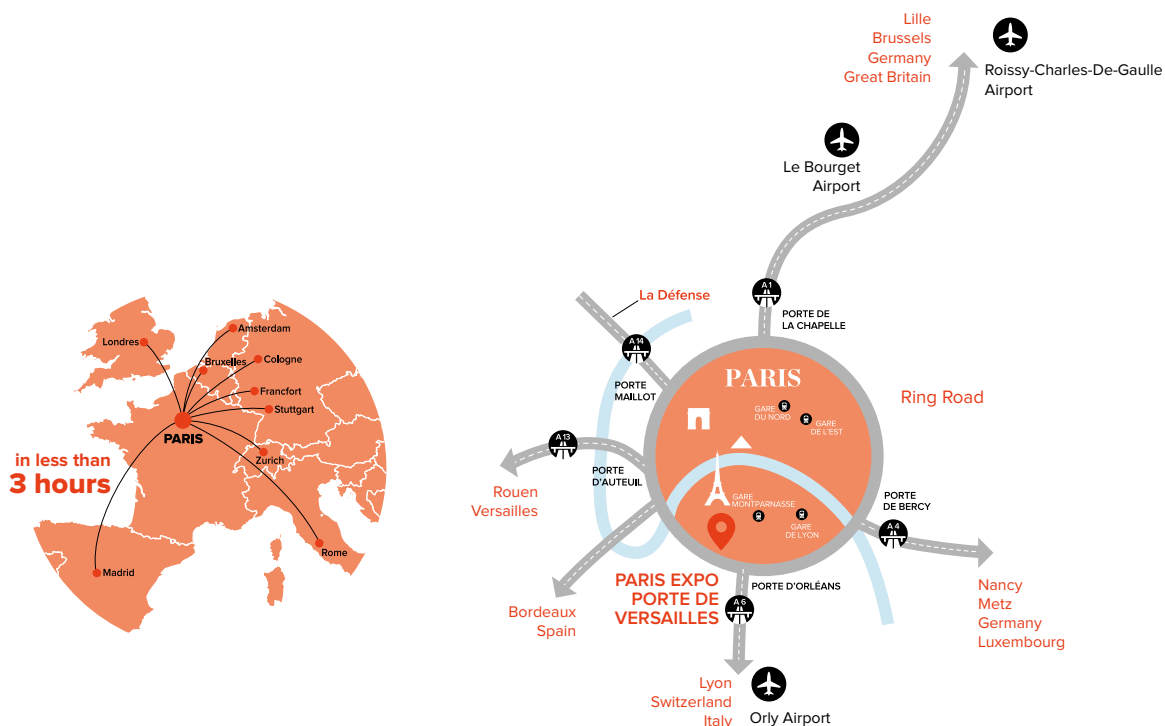
### CONNECTED TO ALL MAJOR EUROPEAN CAPITALS

...in the heart of Europe, a site less than 3 hours away from every European capital.  
A site in the centre of Paris, close to the Eiffel Tower with Parisian life just steps away.



### AN ECO-RESPONSIBLE SITE

...located at the centre of a green landscape of more than 70,000 sqm and 50,000 sqm of green roofs. Our world-class facilities reflect our environmental commitment, both inside and out.



# Viparis Store VIPARIS *store*

## OUR ONLINE ORDERING SYSTEM

Streamlined presentation and ordering, and a simplified user experience – Exhibitor Services has updated its online ordering system... EPEX is now Viparis Store.

Create your new customer account in just minutes\* and discover what Viparis Store has to offer.



### A SINGLE CUSTOMER ACCOUNT

for ordering services, and a direct link to Logipass without switching usernames.



### IMPROVED TRACKING OF YOUR ORDERS,

from shopping lists to invoicing, with a complete log of past messages.



### AN EXTENSIVE CHOICE

of products and services for your stand, provided by Viparis and a selection of accredited partners.



### CLEARLY-PRESENTED SERVICES

with detailed technical descriptions to help you make the right choice.



### AND, AS ALWAYS, « GUEST ATTITUDE »,

our service policy – ongoing support from a team of dedicated experts who can assist you via phone, email and chatroom.

\* Your EPEX login details are not valid for Viparis Store.

Use this link to create your new account today

**[WWW.VIPARISSTORE.COM](http://WWW.VIPARISSTORE.COM)**

# Our Exhibitor Department



## A DEDICATED, FREE-OF-CHARGE SERVICE FOR YOU AND YOUR CUSTOMERS

We have a separate team that helps your exhibitors choose and implement the services that best match their needs.

From order to installation, our team provides customised, detailed follow-up to ensure your exhibitors receive the best service per square metre.

### THE BENEFITS FOR YOU

- ◆ Advice about the services to offer your exhibitors
- ◆ Ongoing updates about the state of exhibitors' orders
- ◆ Attentive follow-up, both upstream and on site, to ensure your event opens and operates under the best possible conditions

### THE BENEFITS FOR YOUR EXHIBITORS

- ◆ Tailored, proactive advice by teams with an in-depth knowledge of the site
- ◆ Technical solutions customised to meet their needs
- ◆ On-site reception at your sides

### THE EXHIBITOR DEPARTMENT TOOLS

- ◆ An online ordering system: [www.viparisstore.com](http://www.viparisstore.com)
- ◆ The Exhibitor Services Guide
- ◆ A call centre staffed by a multi-lingual team
- ◆ Trained, on-site teams of reception staff
- ◆ Approved partners offering services tailored to our sites



**Christel LAVAL**

Exhibitor Department Director

+33 1 48 63 31 34

+33 6 30 50 30 27

[christel.laval@viparis.com](mailto:christel.laval@viparis.com)



**Solange WEYN**

Head of Sales Department

+33 1 48 63 30 26

+33 6 24 51 81 12

[solange.weyn@viparis.com](mailto:solange.weyn@viparis.com)

**CONTACT: [CONTACT@E-VIPARISSTORE.COM](mailto:CONTACT@E-VIPARISSTORE.COM) / +33 1 40 68 16 16**

# Viparis's approach to quality

---



## THE ART OF HOSPITALITY

At Paris Expo Porte de Versailles, as at all our venues, we strive to offer you the best service per square metre. As part of our Guest Attitude policy, we carry out continual quality checks to ensure a positive experience for all visitors, paying particular attention to the welcome they are given, along with signage, car parks, toilets and meeting areas.



## LET'S TALK

We value our customers' feedback, because it helps us improve what we do. For this reason, as soon as your event is over, we send a satisfaction questionnaire to you and your exhibitors. We then organise a debriefing meeting to assess your experience and discuss areas for improvement.

# Our CSR initiative

## Better events - Viparis 2030

---

### 3 KEY ISSUES, 9 GOALS



Over the past several years, Viparis has worked to **reduce its environmental impact** and to **share best practices with its customers and partners**. In 2014, Viparis was the first events management firm to earn ISO 20121 certification (the highest international accreditation for sustainable events management) for all its sites.

In 2016, to help **roll out our sustainable development strategy on a daily basis at every venue and within the company**, Viparis appointed a group of CSR “ambassadors”. In 2018, after monitoring our carbon footprint and actively engaging with our stakeholders we launched our CSR programme – Better Events - Viparis 2030. These goals will be fulfilled by meeting precise and quantifiable objectives.

Viparis has now consolidated its CSR commitments around three main themes – Better for the Environment, Better Heritage, and Better @ Heart, which reflect the three cornerstones of sustainable development. These will enable Viparis to contribute to the UN’s Sustainable Development Goals at a local level.

#### 1 **BETTER FOR THE ENVIRONMENT: A SMALLER ENVIRONMENTAL FOOTPRINT**

By 2030, Viparis intends to cut its sites’ carbon footprint by 50% as compared to 2016 levels. As a signatory to the Net Zero Carbon Events pledge, Viparis is also committed to achieving net zero emissions by 2050. This will involve reducing our energy consumption and making our buildings more sustainable. At the same time, Viparis is working to protect the environment and its resources by recycling waste and reintroducing biodiversity at its venues. We are also dedicated to promoting better mobility by encouraging visitors to use sustainable transport and by streamlining event-related logistical flows.

#### 2 **BETTER HERITAGE: EVENT-BASED VALUE CREATION**

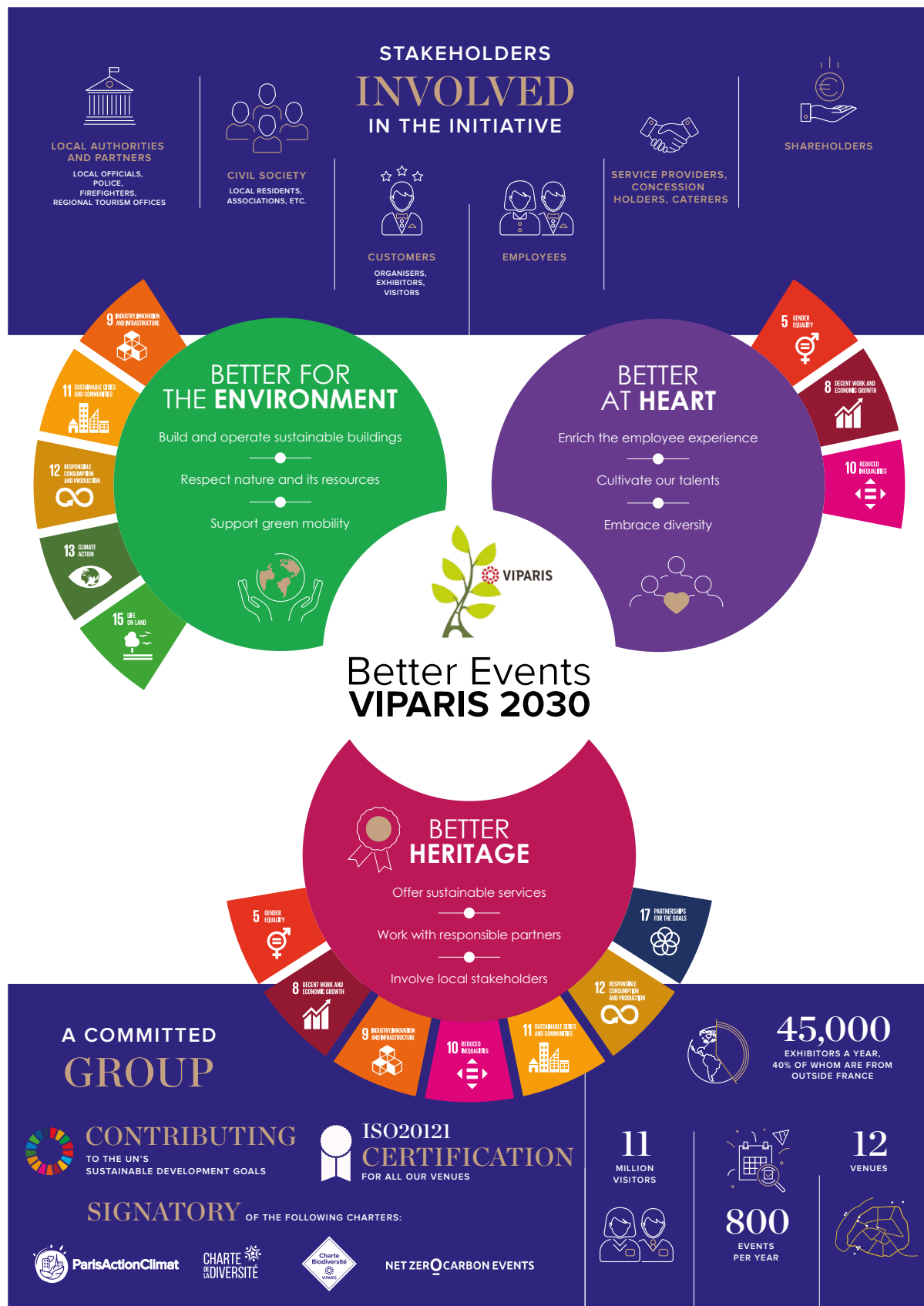
By offering an increasing number of sustainable services and forging ties with socially committed partners, Viparis’s business activity has roots throughout France. We rate our partners using CSR criteria, and they play an active role in helping us fulfil our CSR objectives.

#### 3 **BETTER @ HEART : FOCUSING ON OUR TEAMS AND PROMOTING DIVERSITY**

As part of our CSR programme, we also take our employees’ concerns to heart. We make sure that they are fully part of our vision via annual CSR objectives and measures introduced at each venue. Viparis also seeks to promote diversity by encouraging gender parity, generational diversity and an inclusive workspace for individuals with disabilities.

### OUR PROMISE TO OUR CUSTOMERS

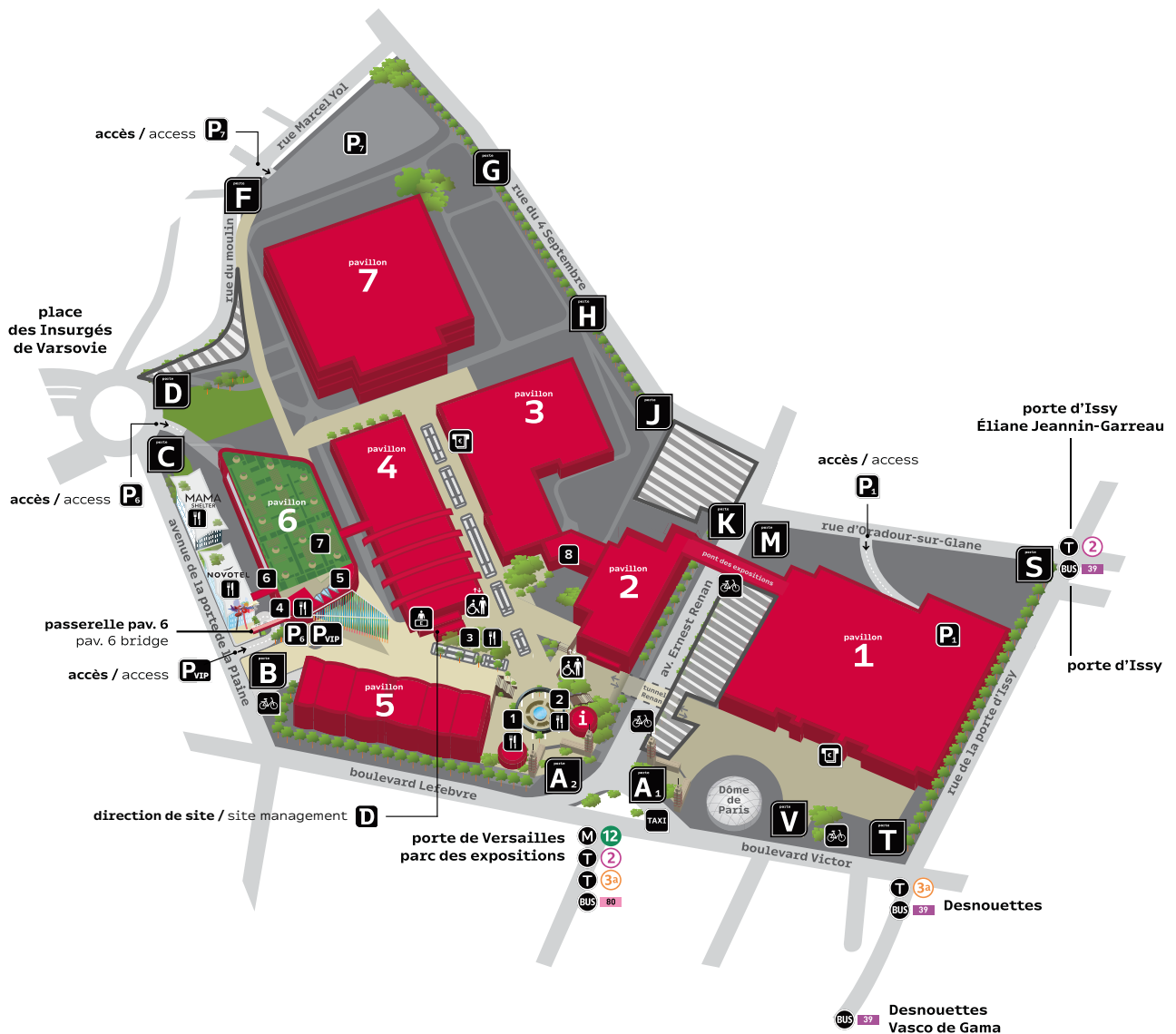
Spaces and services for responsible events and value creators.



For more information about Viparis's CSR strategy: <https://www.viparis.com/fr/developpement-durable>

# Site map

Your Project Manager can provide simplified plans of your space(s).



## hub des services



réception



toilettes



espace bébé



distributeur

RELAY

presse &amp; tabac



ascenseur



distributeur



service exposants



parking



direction du site



station vélib'

## la restauration food and drink



1 PAUL



2 monop'daily



3 M



4 LE PERCHOIR

## espaces divers other



5 LA SERRE



6 les carrés parisiens



7 ferme urbaine



8 FRENCH EVENT BOOSTER



zone travaux

work area

# On-site facilities

Paris Expo Porte de Versailles's many on-site resources will make your life easier, and help you manage your event with complete peace of mind.

## CAR PARKS

There are a number of car parks for exhibitors and visitors. Please contact your Project Manager for more information.

## CENTRAL WALKWAY

Numerous services are available along the central walkway, including reception facilities, our concierge service, restaurants, shops, ATMs, lounge areas fitted with connected furniture, toilets with baby changing areas, and more.

## THE DIGITAL PLAZA

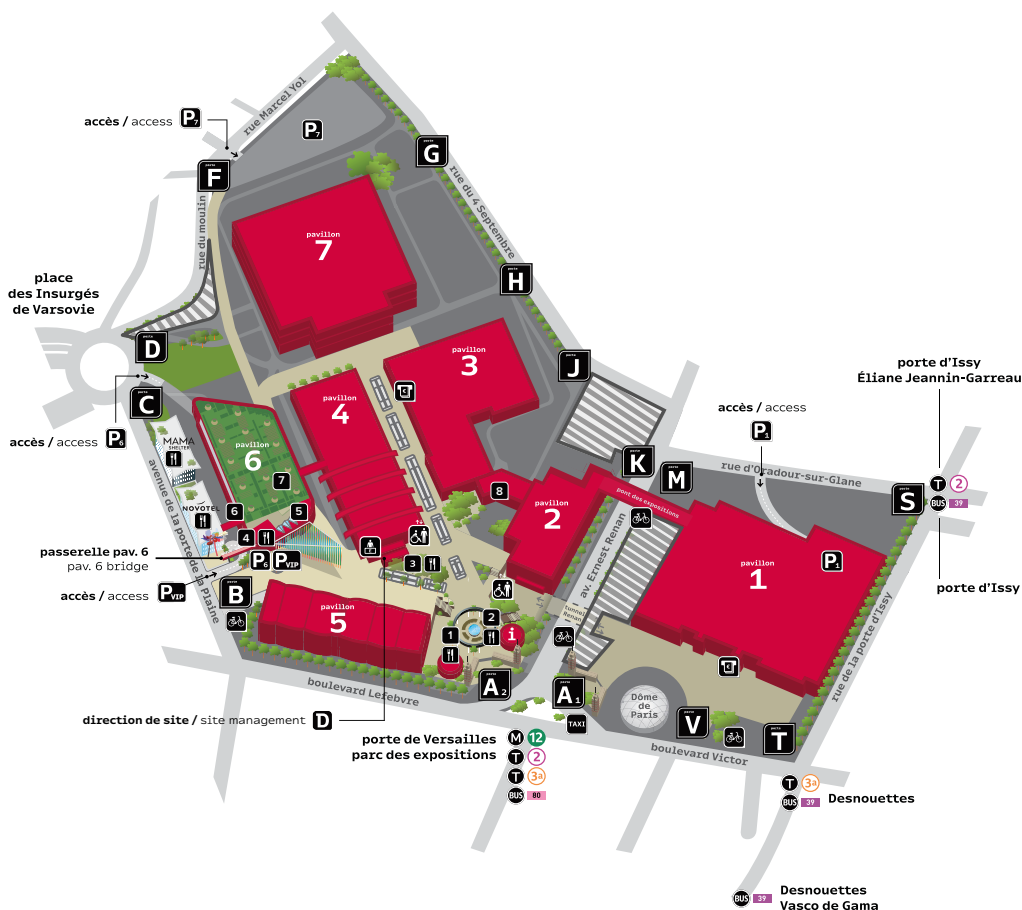
The Digital Plaza, which greets visitors arriving via the complex's main entrance at Gate A2, is a ring of LED screens 40 metres in diameter. It provides a panoramic overview of the site's activities, guiding and directing guests to your event's pavilion(s).

## METRO, TRAMWAY and BUS

Paris Expo Porte de Versailles is accessible by multiple means of public transport, including Metro line 12, Tramway lines T2 and T3, Bus 80 and 39, etc.

## TAXI

A taxi stand is located right next to the complex at Gate A1.



### i hub des services



### services services



### la restauration food and drink

- 1 PAUL
- 2 monop'daily
- 3 M
- 4 LE PERCHOIR Porte de Versailles

### espaces divers other

- 5 LA SERRE
- 6 ni les carrés parisiens
- 7 ni ferme urbaine
- 8 FRENCH EVENT BOOSTER
- zone travaux work area

# PLANNING YOUR FIRST EVENT

## Key points

Is this the first time you've organised an event at the Paris Expo Porte de Versailles? Rest assured – we've thought of everything so that your first event takes place under the best possible conditions.



### THINGS TO KEEP IN MIND

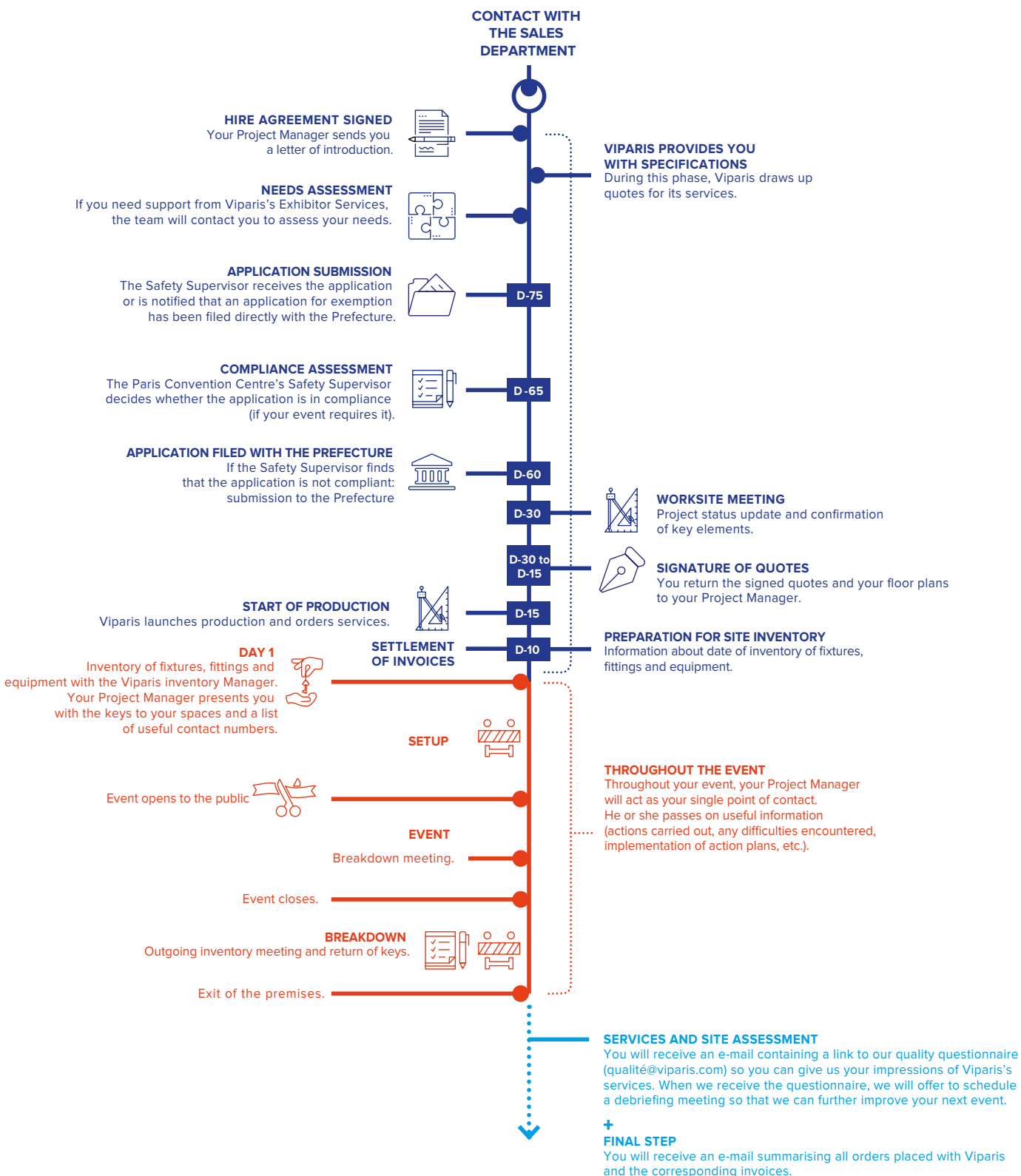
- ◆ Have a **thorough understanding** of the technical plans of your hired spaces before drawing up your specifications
- ◆ **Select the services** you need to make sure your event runs smoothly
  - ▶ Reception and security services (guards and security personnel, cloakroom attendants, reception staff, etc.)
  - ▶ Cleaning services (service providers, on-duty staff, etc.)
  - ▶ Connections (electricity, water, Internet, etc.)
  - ▶ Interior and exterior signage (tarps, in-house displays, etc.)
  - ▶ Food services (caterers)
- ◆ **Keep your exhibitors informed** (Viparis has an Exhibitor Department offering customised solutions - see pages 8 and 9)



### AT YOUR SERVICE

At Viparis, customised services are not just empty words. As soon as your hire agreement is signed, a Project Manager is assigned to your event. He or she will be your primary contact throughout the set-up and operational phases. The Project Manager coordinates the work of Viparis's various logistical and technical partners and can recommend possible solutions based on your needs.

# Essential steps





# Our full range of services

## TYPES OF SERVICES

18

## WHAT'S INCLUDED IN YOUR HIRE AGREEMENT ?

19

Included charges  
Additional charges

## INCLUDED SERVICES

22

Traffic management

## EXCLUSIVE MANDATORY SERVICES

23

On-duty electrical support

## EXCLUSIVE OPTIONAL SERVICES

24

Public address system for the pavilions  
Override  
Slings  
Spreaders Hall 1  
Exterior and interior signage  
Electricity and utilities  
Telephony, Internet and Wi-Fi  
Car parks and traffic flows  
Meeting rooms  
Conference rooms  
Hire of offices / Mezzanine central management office

## OPTIONAL SERVICES

40

Installation  
Your stand in the spotlight  
Reception services

1

# TYPES OF SERVICES

Viparis has a wide range of services to ensure that you have everything you need for your event. From on-site electricians to signage and public address systems, we can provide a first-class welcome for your exhibitors.

## FOUR CATEGORIES OF SERVICES

### Included services:

These services are automatically included in your hire agreement.

### Mandatory services:

These services are not included in your hire agreement but, depending on the type of event, are mandatory in order to comply with the safety standards in force.

### Exclusive optional services:

To create a truly customised event, Viparis offers a large selection of additional services. These services can only be provided by Viparis's approved partners, selected after a rigorous tendering process.

### Optional services:

Viparis also has a wide range of services provided by our partners, for an event that is planned down to the smallest detail.



2

# WHAT'S INCLUDED IN YOUR HIRE AGREEMENT ?

## General terms and conditions of the hire agreement - Included charges

PERIODS AND TIMES during which the CHARGE is included in the rental	CHARGES INCLUDED	COMMENTS
<b>PLANS AND FIRE INSURANCE</b>		
At the latest at the time of signature of the LEASE.	<b>PLANS</b> Provision of the PLANS in digital format like PDF and AUTOCAD et provision of a paper copy upon request.	The use of these PLANS is compulsory (according to articles 6.2 and 6.3 of the General Terms and Conditions of the LEASE).
Throughout the DURATION OF THE OCCUPATION OF THE HIRED PREMISES Daily, 24 hours a day	<b>FIRE INSURANCE</b> Share of the premium for fire insurance arranged by Viparis Porte de Versailles and covering the PAVILIONS as well as the MACHINERY AND EQUIPMENT at all times.	
<b>ACCESS AND TRAFFIC MANAGEMENT</b>		
Throughout the entire DURATION OF THE LEASE from 7am to 11pm	<b>ACCESS AND TRAFFIC MANAGEMENT</b> Access of vehicles and pedestrians to the CENTRE, control of vehicle access and circulation and parking inside the perimeter, using appropriate means according to the opening times and nature of the EVENT.	
Throughout the PERIODS OF SET-UP AND DISMANTLING from 7am to 11pm and during the PERIODS WHEN THE EVENT IS OPEN TO THE PUBLIC.	<b>PARKINGS</b>	The dedicated parking area will be indicated by the LESSOR.
<b>LIGHTING</b>		
Throughout the entire DURATION OF THE LEASE	<b>PUBLIC LIGHTING</b> Zoned lighting of the roads, driveways and outdoor terraces required for the event, including power.	
Throughout the entire DURATION OF THE LEASE	<b>ÉCLAIRAGE DE SÉCURITÉ</b> Provision and operation of the emergency, ambient and orientation lighting systems, including power.	
<b>CLEANING</b>		
Throughout the entire DURATION OF THE LEASE Daily, 24 hours a day, during the set-up and dismantling days	<b>SERVICE TOILETS</b> Toilets and utility sinks provided to companies working on set-up and dismantling • Opening and maintenance of the toilets • Supplies provided • Basic upkeep	
<ul style="list-style-type: none"> <li>Throughout PERIOD THE EVENT IS OPEN TO THE PUBLIC: Daily from when the EVENT opens and until it closes, from 9am to 7pm</li> <li>Outside the EVENT OPENING PERIOD: - two days before the EVENT START DATE, from 8am to 6pm. - day before the EVENT START DATE, from 8am to 10pm. - day after the EVENT END DATE, from 8am to 6pm.</li> </ul>	<b>PUBLIC TOILETS</b> <ul style="list-style-type: none"> <li>Opening and maintenance of all the toilet blocks included in the HIRED PREMISES and public areas</li> <li>Supplies provided</li> <li>Toilets kept clean by the presence of one or more attendants according to the event schedule</li> </ul>	Attendants present onsite ½ hour before and ½ hour after EVENT OPENING TIMES.

PERIODS AND TIMES during which the CHARGE is included in the rental	CHARGES INCLUDED	COMMENTS
<b>CLEANING</b>		
Throughout PERIOD THE EVENT IS OPEN TO THE PUBLIC: Daily from when the EVENT opens and until it closes, from 9am to 7pm.	<b>UPKEEP OF COMMON AREAS</b> <ul style="list-style-type: none"> <li>Emptying of rubbish bins by the LESSOR along the pedestrian walkways of the CENTRE and upkeep of surrounding areas. Emptying can be done several times a day if bins are full.</li> <li>Upkeep of common areas and equipments</li> </ul>	
<b>VENTILATION, HEATING, COOLING</b>		
Throughout the entire DURATION OF THE LEASE	<b>VENTILATION EQUIPMENT</b> Provision and operation of fixed equipment for ventilation of the HIRED PREMISES in compliance with current regulations	Energy consumption not included
Throughout PERIOD THE EVENT IS OPEN TO THE PUBLIC	<b>HEATING EQUIPMENT</b> Provision and operation of fixed equipment for HEATING of the HIRED PREMISES	Energy consumption not included
Throughout PERIOD THE EVENT IS OPEN TO THE PUBLIC	<b>COOLING EQUIPMENT</b> Provision and operation of fixed equipment for HEATING of the HIRED PREMISES (except Hall 7.1 and Pavilion 2)	Energy consumption not included
<b>ASSISTANCE, SECURITY</b>		
Throughout PERIOD THE EVENT IS OPEN TO THE PUBLIC: Daily from when the EVENT opens and until it closes, from 9am to 7pm depending on actual EVENT OPENING TIMES	<b>RECEPTION</b> Presence at the reception located at GATE A2 of a bilingual Hostess, French and English	
Throughout PERIOD THE EVENT IS OPEN TO THE PUBLIC Daily from when the EVENT opens and until it closes, from 9am to 7pm depending on actual EVENT OPENING TIMES	<b>DISABLED ACCESS</b> Wheelchairs may be borrowed from the Information Booth or, if closed, at the General Security Post.	Subject to wheelchair availability and in exchange for a security deposit (refunded afterwards).
<ul style="list-style-type: none"> <li>Throughout PERIOD THE EVENT IS OPEN TO THE PUBLIC: Daily from one hour before the EVENT opens until one hour after it closes, between from 9am to 7pm.</li> <li>Outside the EVENT OPENING PERIOD: <ul style="list-style-type: none"> <li>- Two days before the EVENT START DATE, between from 8am to 6pm.</li> <li>- One day before the EVENT START DATE, between from 8am to 7pm.</li> <li>- The day after the EVENT END DATE, between from 8am to 6pm.</li> </ul> </li> </ul>	<b>CLIENT SERVICE ASSISTANCE (ASC)</b> On call technical support for assistance on the hired premises	
Throughout the entire DURATION OF THE LEASE	<b>OPERATION OF FIRE SAFETY POINTS</b> In compliance with the Safety Specifications	
Throughout PERIOD THE EVENT IS OPEN TO THE PUBLIC: presence of safety personnel from 1h before the EVENT OPENING TIME until 1h after the EVENT CLOSING TIME	<b>FIRE SAFETY AND ASSISTANCE</b> <ul style="list-style-type: none"> <li>Operation and intervention team of the Fire Safety Post, according to the Safety Specifications</li> <li>Operation and intervention team of the General Safety Post</li> <li>Lightweight vehicle intervention and first aid</li> </ul>	Submitted to the recommendations of the Safety Commission of the Prefecture de Police de Paris, who may impose the presence of extra security agents
Throughout PERIOD THE EVENT IS OPEN TO THE PUBLIC: presence of safety personnel from 1h before the EVENT OPENING TIME until 1h after the EVENT CLOSING TIME, from 9am to 7pm	<b>PEDESTRIAN TRANSPORT</b> <ul style="list-style-type: none"> <li>Operation of lifts, escalators, travelators between PAVILIONS, PARKING AREAS, RESTAURANTS of the CENTRE</li> </ul>	

## General terms and conditions of the hire agreement - additional charges

DEFINITION OF EXTRA CHARGES	INCLUDED CHARGES OR EQUIPMENTS AFFECTED	COMMENTS
<b>ELECTRICITY</b>		
EQUIPMENTS energy consumption	<ul style="list-style-type: none"> <li>• Interior lighting of hired premises</li> <li>• Ventilation</li> <li>• Heating</li> <li>• Cooling</li> <li>• Service Toilets</li> <li>• Public Toilets</li> </ul>	Actual consumption invoiced after the event.
<b>OTHER ENERGY USE</b>		
Other consumption of energy (heating, gas)	<ul style="list-style-type: none"> <li>• Heating</li> <li>• Cooling</li> </ul>	Actual consumption invoiced after the event.
<b>SCHEDULE OVERRUN</b>		
Operation of one or more EQUIPMENTS or services beyond the schedule indicated in Appendix 2, during set-up and dismantling periods	<ul style="list-style-type: none"> <li>• Access and circulation</li> <li>• Parking</li> <li>• Upkeep of common areas</li> <li>• Heating and cooling</li> <li>• Clients Service Assistance (ASC)</li> <li>• Fire Safety and assistance</li> <li>• Pedestrian Transports (lifts, escalators, travelators)</li> <li>• Public toilets</li> </ul>	Every hour started is charged
<b>NLATE OPENING</b>		
Official opening to the public of all or part of the HIRED PREMISES beyond the schedule 9am to 7pm which would require to extend the operating time of equipment and services	<ul style="list-style-type: none"> <li>• Access and circulation</li> <li>• Parking</li> <li>• Upkeep of common areas</li> <li>• Heating and cooling</li> <li>• Clients Service Assistance (ASC)</li> <li>• Fire Safety and assistance</li> <li>• Pedestrian Transports (lifts, escalators, travelators)</li> <li>• Public toilets</li> <li>• Reception</li> <li>• Presence of a manager from Paris Expo Porte de Versailles representing Viparis management</li> </ul>	Schedule applied upon written request from the LESSEE

3

## INCLUDED SERVICES

### Traffic management

To keep both people and equipment safe, Viparis has introduced a vehicle access control procedure.

To access the loading zones, vehicles must be registered using the [logipass.viparis.com](https://logipass.viparis.com) website prior to their arrival at the venue.

Your Project Manager is available to help you set up this registration process.



#### REMINDER

As part of the transformation of Paris Expo Porte de Versailles, we have completely redesigned the complex's logistics to free up space near the pavilions that are open to the public. Parking is prohibited within the complex during the period your event is open to the public (VIP zone excluded).

## VIPARIS'S CUSTOMISED LOGISTICS

### VIGILANCE IS EVERYONE'S JOB



#### An efficient solution

Improving event logistics through a smoother setup and breakdown process



#### A common goal

Greater efficiency and time savings



#### A single resource

A dedicated IT application to manage logistics, track and parking both before and after every event, and at every one of our sites



#### A targeted approach

Every company, exhibitor and contractor involved in events and performances



#### A simple and effective process

Improved reception for both customers and exhibitors  
A better match between our newly fitted-out spaces and the services and logistics we provide.

Only the Logipass registration process is included in your hire agreement. Traffic control is an optional service

4

# EXCLUSIVE MANDATORY SERVICES

## On-duty electrical support

To guarantee the safety of all persons on the premises of Paris Expo Porte de Versailles, and in application of French law (Decree of 18 November 1987) concerning public access buildings, technical staff are present as soon as power is supplied to the power boxes.

### RESPONSIBILITIES

- To immediately respond to any technical incident that could disturb either the smooth running of an event or disturb visitors and exhibitors
- To ensure the operation of the various electrical networks, in accordance with guidelines established by the Organiser
- To make basic repairs to stand connections (except in case of gross negligence or damage to the equipment)
- To provide Organisers with general technical assistance

#### THE NUMBER OF ON-DUTY TECHNICIANS DEPENDS ON THE PERIOD

<p>The cost of the electrical connection includes (as soon as power is supplied):</p> <ul style="list-style-type: none"><li>• 1 electrician for each 6,000 sqm of floor space when the event is open to the public from 9am to 7pm, except for Sundays and holidays</li><li>• 1 electrician for each 12,000 sqm of floor space from 9am to 7pm during setup and breakdown, and as soon as power is supplied to the power boxes</li></ul>	<p>Not included (during the time when power is supplied):</p> <ul style="list-style-type: none"><li>• 1 electrician for each 6,000 sqm of floor space when the event is open to the public from 7pm and 9am, as well as all day Sundays and holidays</li><li>• 1 electrician for each 12,000 sqm of floor space during setup and breakdown and as soon as power is supplied to the power boxes from 7pm to 9am, as well as all day Sundays and holidays</li><li>• 1 electrician for each 100,000 sqm of floor space: not including periods of activity (setup, breakdown and event opening hours) and as soon as power is supplied to the power boxes</li></ul>
--	---

Not including periods of activity and as soon as power is supplied, a portion of the cost of duty staff shall be applied and invoiced on a pro rata basis for all occupied spaces, all events combined.



FOR RATES  
SEE PAGE 52

5

## EXCLUSIVE OPTIONAL SERVICES

### Public address system for the pavilions

#### PAVILION PUBLIC ADDRESS SYSTEM

Paris Expo Porte de Versailles has a public address system that covers all of the various spaces. Coverage can be adapted for individual spaces.

Contact your Project Manager for advice on the best solution.

##### SERVICES PROVIDED

- Supply and setup of public address system equipment
- Electrical energy consumption
- Maintenance during your event's opening hours



**FOR RATES  
SEE PAGE 53**

### Override

All installations that involve sound (presentations, fashion shows, conferences, etc.) must be fitted with an override box that will allow you to broadcast warning messages if necessary.

Your Project Manager will be happy to assist you in setting up the override.

##### SERVICES PROVIDED

- Use of a electronic box for broadcasting warning messages



**FOR RATES  
SEE PAGE 53**



##### USEFUL TIP

The override box is placed on a terminal box. Please specify exactly where this terminal box should be placed.

# Slings

The installation of your event may require slings.

## SERVICES PROVIDED

- Feasibility study based on the weight to be suspended and its location
- Use of an elevated platform for installation
- Placement at desired location and height
- Technical support throughout the event
- Breakdown



**FOR RATES SEE  
PAGE 53**



## REMINDER

For safety reasons, slings can only be installed by Viparis. A sling may not bear more than 80 kg.

- Viparis shall hang all slings in all pavilions with the exception of standard lightweight signage indicating basic services and aisles at the event, provided that the total weight is less than 3 kg.
- Certain areas in the complex are not suitable for slings (beneath the ring road).

Please refer to the Specific Terms and Conditions of the Lease for further information.



## IMPORTANT

### Sling under the Paris ring road

Further to the various studies, validations and justifications made by the design offices EBBM and LP2 B, the rule concerning the subject of the sub-peripheral slinging of Pavilions 3 and 4 is as follows:

- 1) Maximum permissible mass/point: 40 kg (weight=0.39kN)
- 2) Type of hook: in direct stitches under fishnet (V stitches are prohibited)
- 3) Location of the hooks on the net: around the supports in threaded rod up to 1m50

NB1: the hook under the support is forbidden

NB2: in case of twisting of the line, installation is forbidden

# Spreaders Hall 1

## ATTENTION - YOUR SLING ORDERS / HANGING POINTS UNDER THE NAVE OF HALL 1

The infrastructures of hall 1 have evolved for more thermal comfort.

The booths located under the new ducts of the nave may need to use preriggs to hang lighting trusses and other equipment on hanging points.

These installations can lead to an additional cost in your orders.

We are at your disposal to study with you the technical solutions adapted to your needs, contact us.



**Your Project  
Manager is at  
your disposal**

EXCLUSIVE OPTIONAL  
SERVICES

ROTATING DISPLAYS AND POWER SUPPLY

Suspended rotating displays are driven by an electric motor.

SERVICES PROVIDED:

- Hire of rotating unit
- Installation of slings and unit
- Power supply setup
- Installation of the suspended signage (power box and electrical consumption are not included)

REFERENCES AND RATES

SERVICE	REFERENCE	PRICE IN € (EXCL. TAX)
Rotating display – flat rate (includes 3 slings and electrical cabling)	38107	572.02



FOR RATES SEE  
PAGE 53

# Signage

EXCLUSIVE OPTIONAL  
SERVICES

## EXTERIOR AND INTERIOR SIGNAGE

Enhance the visibility of your event using the various displays on building façades and along pedestrian walkways. Signage at various strategic locations (both inside and outside) can help guide your visitors and publicise your event.



### USEFUL TIP

Viparis has entrusted Metropole, a company specialising in event signage, with the exclusive management of the marketing of these displays, as well as the printing, packaging and installation of various supports (tarpaulins, PVC materials, adhesives, etc.).

Metropole's teams will be happy to help you with your signage concept and draw up technical and commercial offers best suited to your needs.



**MÉTROPOLE** 167-169 avenue des Grésillons 92230 GENNEVILLIERS

Tél.: +33 1 41 11 81 10 - [www.metropole.me](http://www.metropole.me)

Contact : **Sandrine LAURENT** Tél.: +33 7 62 01 52 04 Email: [sandrine@metropole.me](mailto:sandrine@metropole.me)

Metropole can also provide advertising management solutions for offering your exhibitors and sponsors fixed and event-based displays.

For more information, see «Advertising Displays» in the Lessee's Information Booklet. Contact the advertising agency for more information.



**Advertising agency contact**

**Gary BLUMENFELD**

Tél.: +33 6 16 26 04 39

**Laura BIOTOIS**

[laura@metropole.me](mailto:laura@metropole.me)

Thanks to Next'One, you can place advertising in the Paris Expo Porte de Versailles toilets.

Size: portrait orientation 29.7 x 42 cm. • Digital displays: 40 x 55 inches

For more information, please contact Next'One at: +33 4 79 60 09 34 - [www.next-one.fr](http://www.next-one.fr)



# Electricity and utilities

## ELECTRICITY

Energy is supplied by Viparis as a 50 hertz 3-phase current with an average voltage of 400 volts between phases or 240 volts between phases and neutral.

Current is distributed by a terminal box fitted with a 32 amp four-pole circuit breaker and 32 mA differential switch (to protect people), which Viparis representatives must be able to access at all times.

Current is distributed in accordance with a power supply schedule determined in coordination with your Project Manager.

## ELECTRICAL CONNECTIONS FOR ORGANISERS

Permanent electrical connections for your use only, for example to power your central management office, press room, forum, reception area, etc.

### SERVICES PROVIDED

- Installation of a terminal box fitted with a circuit breaker (30 or 300 mA, depending on the requested wattage)
- Terminal box installation and removal by qualified staff at the location requested
- Technical support 24/7 throughout your event

## REFERENCES AND RATES

Energy consumption is invoiced after your event.



**FOR RATES  
SEE PAGE 55**

## OUR CUBE ELECTRICAL BOXES

The CUBE, **new electrical box** occupies a minimum of space on the stand floor. You can adjust the power from 1 to 20 kW.

- 3 single-phase socket outlets  
16A - 230V - 1P+N+E
- 1 three-phase 32A socket  
32A 230V/400V  
CEE type/P17 3P+N+E
- 1 USB 2A - Type A socket, permanently powered
- Height : 40 cm - Width : 37,5 cm - Depth : 30 cm



### REMINDER

Power (kW) is the ratio of voltage multiplied by intensity. ( $P=U \times i$ ) Ohm's law.

U is expressed in volts and i is expressed in amps

• The formula according to EDF gives ( $\cos = 0.95$ ):  
 $c P \text{ (kVA)} = 1,667 \times i \text{ (A)}$        $c i \text{ (A)} = P \text{ (kVA)} / 1,667$

# Electricity and utilities

## FIXED-PERIOD AND PERMANENT ELECTRICAL CONNECTIONS

- **Fixed-period connections:** current is available each day during the hours when power is supplied to the event, as agreed with your project manager;
- **Permanent connections:** necessary for equipment that requires a round-the-clock power supply (such as refrigeration or computer equipment). Current is available 24/7 for the agreed power supply period.

### SERVICES PROVIDED

- Installation of a terminal box fitted with a circuit breaker (30 or 300 mA, depending on the requested wattage)
- Connection and removal of the terminal box by qualified staff at the designated location
- Electrical power for the duration of your event
- Technical support throughout your event

### REFERENCES AND RATES

Prices are based on the number of hours power is supplied. Contact your Project Manager for a quote based on a unit price.



**FOR RATES  
SEE PAGE 55**

## WORKSITE ELECTRICAL POWER

This provides Exhibitors with the electricity they need during setup, before power is supplied to your pavilion, and during breakdown after the end of fixed-period and permanent power supply.

### SERVICES PROVIDED

- Installation of a terminal box fitted with a circuit breaker (30 or 300 mA, depending on the requested wattage)
- Electrical power for the agreed-upon period
- Technical support

### REFERENCES AND RATES

Price on request. Please contact your Project Manager.



### USEFUL TIP

During setup and breakdown, an exhibitor can order a higher or lower worksite electrical power than his initial order.

If the power requires a change of electrical box or cabinet, an installation and removal will be charged to the exhibitor.



## GENERAL TERMS AND CONDITIONS

- Boxes may only be opened by Viparis approved individuals.
- Each connection may only supply a single stand.
- Any installations beyond the terminal box must be carried out accordance with accepted industry practices under the responsibility of the organiser or exhibitor.
- Sound systems must be connected to a specific terminal box that can be overridden by the building's fire safety system (see page 56).

# Electricity and utilities

## ELECTRICAL WORK FOLLOWING CONNECTION

### SERVICES PROVIDED

In addition to providing electrical connections, Paris Expo Porte de Versailles can also take care of your event's overall electrical needs, including providing power to your various spaces, installation of sockets, lighting for stands, etc.

Service includes:

- Equipment hire
- Installation and removal
- Technical support

Since each installation is unique, please contact your Project Manager for a quote based on your requirements.



**FOR RATES  
SEE PAGE 56**

Terminal boxes			
Power (kW)	230 V single-phase	400 V 3-phase	Type of box
3 kW	12 A (over 2 outlets)	3 x 4 A	CUBE/others
4 kW	18 A (over 2 outlets)	3 x 6 A	CUBE/others
6 kW	26 A (over 2 outlets)	3 x 9 A	CUBE/others
8 kW	35 A (over 2 outlets)	3 x 12 A	CUBE/others
10 kW		3 x 15 A	CUBE/others
20 kW		3 x 32 A	CUBE/others
30 kW		3 x 50 A	Cabinet
40 kW		3 x 63 A	Cabinet
60 kW		3 x 100 A	Cabinet
80 kW		3 x 125 A	Cabinet
100 kW		3 x 160 A	Cabinet
The differentials for the boxes are calibrated to 30 mA			

*Electrical cabinets of 30 kW and more are not equipped with sockets.*

EXCLUSIVE OPTIONAL  
SERVICES

## WATER AND COMPRESSED AIR

### WATER SUPPLY

Paris Expo Porte de Versailles can offer water hookups. Your Project Manager will be happy to review your requirements.

### SERVICES PROVIDED

- Hire of equipment required for water supply and evacuation:
  - A 15/21 diameter inlet pipe ending in a stop valve with a threaded male outlet
  - A 32/40 mm flexible wastewater drainage pipe linked to the complex's drainage system
- Connection at the required location and breakdown after use
- Water consumption
- Technical support throughout your event.

Please refer to the Specific Terms and Conditions of the Lease for further information.



### PLEASE NOTE

Any change of water inlet location will incur an additional cost.

Each hookup may supply only a single stand and a maximum of two pieces of equipment.

A settling tank is mandatory for the evacuation of wastewater.

A connection may only supply one stand and a maximum **of two appliances such as kitchen appliances or water fountains.**

**The supply and discharge of water for cooling systems is prohibited.**



**FOR RATES  
SEE PAGE 56**

### ADDITIONAL EQUIPMENT HIRE

Do you need additional equipment? Paris Expo Porte de Versailles can provide additional equipment such as sinks, water-heaters and mobile toilets.



### SERVICES PROVIDED

- Equipment hire
- Installation and removal
- Technical support
- Connection included



### USEFUL TIP

Water heater hire does not include electrical connections. If you connect your equipment yourself, you must ensure it complies with regulations concerning connections to drinking water systems.

Please refer to the Specific Terms and Conditions of the Lease for further information.



**FOR RATES  
SEE PAGE 56**

### COMPRESSED AIR CONNECTIONS

Paris Expo Porte de Versailles offers compressed air for some spaces, with a maximum pressure of 6.5 bars. For Halls 7 and 8, contact your Project Manager.

### SERVICES PROVIDED

- Installation of an air inlet hose with a cut-off valve
- Compressed air treated at an average pressure of 6.5 bar during pressurisation periods defined by the organizer (oiled and non-dried compressed air, expansion valve not supplied)
- Technical support
- Breakdown



### REMINDER

Each connection may only supply a single stand.

### REFERENCES AND RATES

Price on request. Please contact your Project Manager.

EXCLUSIVE OPTIONAL SERVICES

# Our services

## ETHERNET CONNECTIONS AND OPTIONS

Viparis can offer you symmetrical Ethernet connections with guaranteed bandwidths. Symmetrical connections provide equal upload and download speeds.

Each client is given access to an independent, secure virtual local area network (VLAN) via an RJ45 male Ethernet connector cable.

It is important to pick the bandwidth best suited to your needs (email, downloads, etc.) and think about the number of simultaneous users.

Too many users connecting simultaneously may overload the network and cause pages to load more slowly.

Use the following table to choose the bandwidth best suited to your needs.

CHOICE OF SPEED DEPENDS ON USAGE								
DSL Internet connection	Chat	Browsing, e-mail (excl. attachments)	Video-conferencing	Placing orders / VPN	File transfers	Streaming	Stand demonstrations	Multiple e-mail accounts (incl. attachments)
6 Mbps								
10 Mbps								
20 Mbps								
Recommended			Adequate			Not recommended		

- SERVICE INCLUDES:**
- Internet installation and connection
  - Male RJ45 Ethernet connector cable
  - Technical support throughout your event

- REMINDER**
- Computers require a 10/100/1,000 Mbps Ethernet card.
  - Computer configuration is not included in the services provided by Viparis.

# Telephony, Internet and Wi-Fi

All the multimedia equipment you need to effectively interact with your visitors.

## TELECOMMUNICATIONS

### WIRED TELEPHONY

Viparis can install domestic and international communication lines. Our high-quality telephone service offers all the features you need (call waiting, call forwarding, etc.).

Consult your Project Manager for any specific requirements you may have.

#### SERVICES PROVIDED

- Equipment hire
- Line installation
- Free calling between in-house lines, locking, call waiting, etc.
- Technical support



**FOR RATES  
SEE PAGE 57**

## INTERNET & NETWORKS

### ETHERNET CONNECTIONS AND OPTIONS

Paris Expo Porte de Versailles provides high-quality DSL Internet access, with identical upload and download speeds. Each customer has an independent, private and secure VPN.



**FOR RATES  
SEE PAGE 57**

#### SERVICES PROVIDED

- Installation and setup of lines
- A male RJ45 Ethernet connector
- Technical support throughout your event



#### MAKE THE RIGHT CHOICE

Pick the bandwidth best suited to your needs (email, downloads, browsing) and evaluate how many users will be connecting simultaneously (too many users connecting at the same time can saturate the network):

- Chat, e-mail (not including attachments) and web browsing: 4 Mbps
- + Videoconferencing, placing orders/VPN, file transfer, streaming and stand demonstrations: 10 or 20 Mbps



#### REMINDER

- Computers require a 10/100/1,000 Mbps Ethernet card.
- Computer configuration is not included in the services provided by Viparis.

EXCLUSIVE OPTIONAL  
SERVICES

## WI-FI

**FREE WI-FI**

Viparis offers free Wi-Fi access in all of its spaces.

**Technical aspects**

- Network name non-customisable.
- 4Mbps maximum in hired spaces in public areas
- Network operates on the 2.4
- Open Wi-Fi network with captive portal

## WI-FI HOTSPOT

**The WIFI HOTSPOT package allows you to provide your visitors and/or exhibitors with Internet access that is customised to match your event. It deactivates free Wi-Fi in areas where it is installed.**

**You can:**

- Customise the name of your network
- Make access password-protected (8-character WPA2 key)
- Require users to enter their full name and e-mail address when they first connect to WI-FI HOTSPOT
- Set up a customised home page using a Viparis template
- Automatically redirect the Internet connection to the site of your choice.



**FOR RATES  
SEE PAGE 58**

**Technical specifications**

- Customisable network name and home page.
- Maximum data rate per connection: 8 Mbps.
- Frequency band: 5GHz (2.4GHz also possible).
- Optional and customisable login and password.
- Number of simultaneous connections based on spaces occupied by your event.
- Initial connection to a website of your choice
- Redirection to a home page.
- Unlimited connection time automatic disconnection after 30 minutes of inactivity.

## WI-FI EXPERT

The WI-FI EXPERT Network package allows organisers to connect to a 5 GHz Wi-Fi frequency band (802.11 a/n) with a mandatory username and a password that can be customised upon request.

**Technical specifications**

- Automatically disconnects after 30 minutes of inactivity.
- Maximum data rate per connection: 8 Mbps.



**FOR RATES  
SEE PAGE 59**

## WI-FI EXPERT SECURE

This solution provides exhibitors and organisers with high-speed connections for multiple mobile devices (laptops, tablets, latest-generation smartphones) with no disconnection due to inactivity.

It operates only on the 5 GHz (802.11 an) frequency band. Secure connectivity is via Ethernet, and can be used at the same time as Wi-Fi accounts.

You are provided with a single username/password for all connections.

The selected bandwidth is shared amongst all simultaneously connected users.

**Technical specifications**

- No cut-off due to inactivity.
- No WPA key required. Network security is provided by the 802.1X protocol, which requires authentication



**FOR RATES  
SEE PAGE 59**

EXCLUSIVE OPTIONAL  
SERVICES

## PRIVATE WI-FI

The private Wi-Fi network is deployed with dedicated Wi-Fi terminals.

This service is the most flexible and adaptable. The number of terminals to set up depends on the surface of the stand and the number of desired connections.

The access to the network is fully customizable. You can choose its name, assign a security key or not, as well

as identifiers. The throughput per user will be 8 Mbps maximum, on the 2.4 GHz or 5 GHz frequency bands. At the end of your event, we can provide you with several Wifi traffic reports: number of connections, speed, etc.



**FOR RATES  
SEE PAGE 59**



## IMPORTANT

The Wi-Fi offer is not intended to replace Ethernet access, which is the only service that can offer guaranteed speed and security.

It complements the cable-based Internet offer. When using radio channels that are highly sensitive to interference, such as the 2.4 GHz frequency band, data transmission via the network may be severely disrupted or even made impossible by sources of interference or external causes that are beyond Viparis's control.

The type of construction or the materials used for your stand can greatly reduce or prevent connection to the network. Moreover, exhibitors using private hotspot networks, microwave ovens, wireless cameras, Bluetooth equipment or other wireless data transmission systems at a stand may disrupt or prevent the connection to the network.

Since Viparis does not want to place restrictions on exhibitors using such applications at their stands, it is not possible to guarantee reliable network reception on the 2.4 GHz frequency band.

VPN connections, Internet telephony and live broadcasts via the network cannot be guaranteed.

Viparis strongly discourages exhibitors from using their own networks, as these can seriously interfere with Viparis's infrastructure. Should an exhibitor still wish to use his or her own network infrastructure, this must be declared to Viparis so that a reserved channel can be assigned.

The power of the access point will be set to the minimum and should never exceed 5 dBm (3.12 mW), which reduces coverage to 20 m instead of 100 m for the default power of 20 dBm (100 mW).

The access point must be set to the reserved channel in the 2.4 GHz or 5 GHz band indicated by Viparis. The name of the network must include the stand's brand name or a precise reference to the location.

## THE WI-FI SQUAD

The WiFi Squad – one or more technicians tasked with optimising use of the 2.4 and 5 GHz frequencies. They are also on the lookout for exhibitors' WiFi hotspots that disrupt the smooth functioning of Viparis's networks and those of other exhibitors.

## REFERENCES AND RATES

Price on request. Please contact your Project Manager.

## WI-FI ASSISTANCE

Help when you need it. Whether you're having trouble with your equipment, Viparis's Wi-Fi system or another exhibitor's network, call our hotline! Our technicians, located in the event's technical headquarters, will relay your problem to the troubleshooting team.

This service is provided free of charge by Viparis.

# Car parks and traffic flows

## EXHIBITOR AND VISITOR CAR PARKS

The car parks of the Paris Expo Portes de Versailles site are open to welcome your exhibitors and visitors. Parking is free for your exhibitors during the assembly and dismantling. During the opening of your event, your exhibitors and visitors will be able to buy seats parking (subject to availability).



### USEFUL TIP

- Your reservations are valid for the length of your event.
- Our car parks are open from 8am to 11pm (or later, in case of evening opening hours).
- Vehicles can exit at any time, day or night.

## SERVICES PROVIDED

- Use of a convenient car park for light commercial vehicles, utility vehicles and HGVs
- Parking badges with bar codes granting your exhibitors access to your car park.



**FOR RATES  
SEE PAGE 59**

## HANDLING SERVICE

Viparis can provide a handling service. A team can be made available to help your exhibitors unload their materials and carry them to their stands. This service is free for users.

Please contact your Project Manager.

## REFERENCES AND RATES

Rates on request. Please contact your Project Manager.

## BARRIER HIRE

Viparis can provide you with barriers.

## SERVICES PROVIDED

- Hire and delivery of equipment and pickup after event (excluding personnel) at an agreed-upon location.
- This service does not include positioning of the barriers prior to the event.



**FOR RATES  
SEE PAGE 59**

## TRAFFIC CONTROL

To ensure smooth traffic conditions for your exhibitors during setup, we offer a traffic control service that includes management of vehicle movements, access control and parking in the vicinity of pavilions and delivery zones.

## SERVICES PROVIDED

- Management of vehicle movements by qualified personnel
- Access control, identification and vehicle parking
- Contacting exhibitors if there is a need to move vehicles
- Walkie-talkies
- The use of ancillary areas (subject to availability)



### REMINDER

The number and location of parking places allocated are decided at the coordination meeting. Viparis will accept the return of any unused parking spaces within the limit of 10% of the quota ordered, no later than the first day your event opens to the public. After this, unused parking places will be invoiced.

# Meeting rooms

With 46 meeting rooms, Paris Expo Porte de Versailles can configure rooms adjacent to your exhibition spaces. They can be personalised in a number of ways: modular or standard partitions, blackout curtains, carpet tiles, a dais, chairs, a lectern, audiovisual material, etc...



## USEFUL TIP

Ask your Project Manager about other specific services such as:

- A more elaborate sound system
- Video
- Stage lighting
- Internet access and IT equipment
- Simultaneous interpretation
- Specific furniture requirements
- Signage
- Floral decoration
- Reception staff

## REFERENCES AND RATES

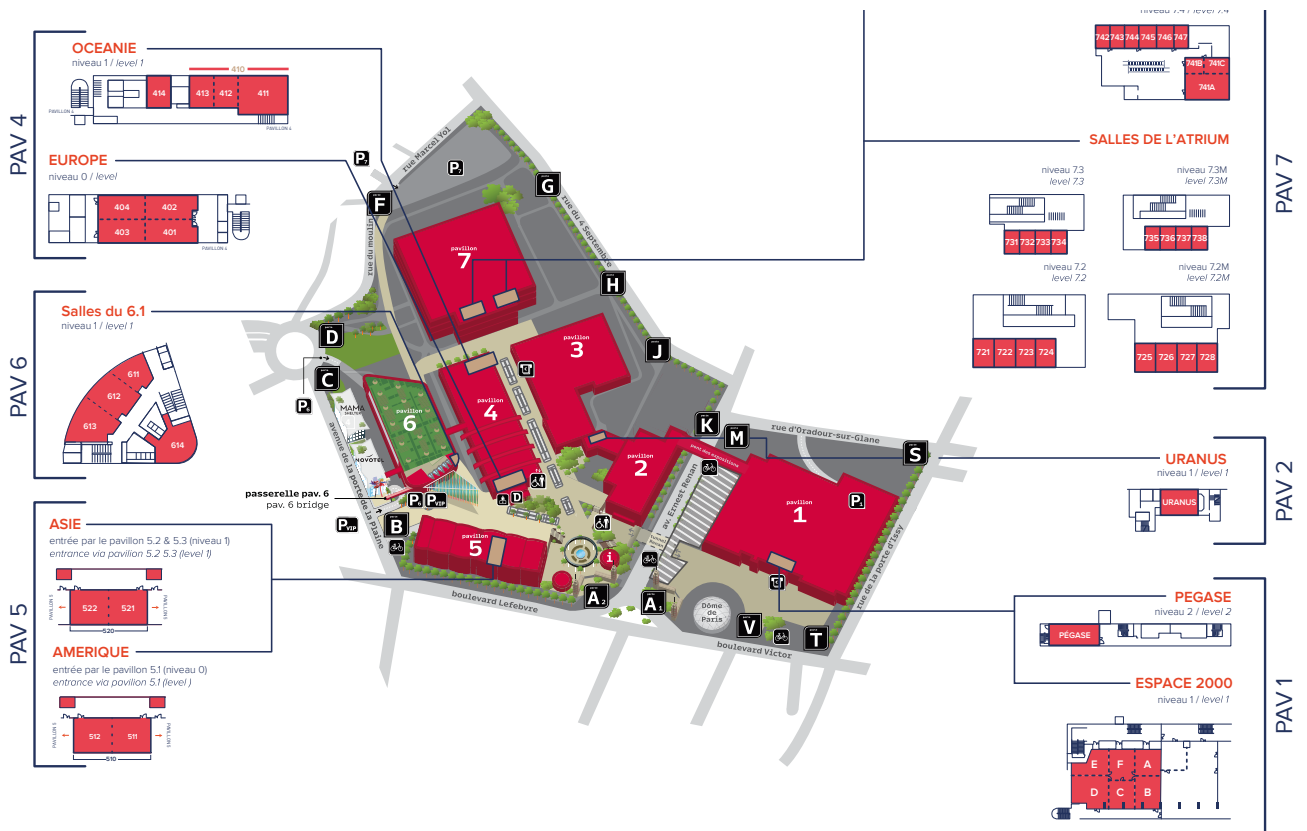
Rates on request. Please contact Sandrine SCHMITT - Sales manager - +33 6 66 71 70 31



# Meeting room services

Services INCLUDED in your lease agreement	EXCLUSIVE and OPTIONAL services designed to meet your needs (provided by Paris Expo Services)
<p><b>TECHNICAL INFRASTRUCTURE</b></p> <ul style="list-style-type: none"> <li>• General lighting</li> <li>• Ventilation, cooling and heating (except during setup and breakdown)</li> <li>• Technical building staff: lighting / ventilation / cooling / heating / lifts / escalators</li> </ul> <p><b>LOGISTICS &amp; SECURITY</b></p> <ul style="list-style-type: none"> <li>• Traffic management for delivery access (subject to Logipass use)</li> </ul> <p><b>SECURITY</b></p> <ul style="list-style-type: none"> <li>• Fire safety control centre</li> </ul> <p><b>TECHNICAL EQUIPMENT</b></p> <p><b>Pavilion 7- Atrium and level 7.4 meeting rooms: (except room 741):</b></p> <ul style="list-style-type: none"> <li>• 1 fixe LED screen (86" or 98" depending on the room) with click &amp; share system</li> </ul> <p><b>Meeting rooms in other Pavilions:</b></p> <ul style="list-style-type: none"> <li>• 1 canvas screen</li> </ul> <p><b>FITTINGS &amp; FURNISHINGS</b></p> <ul style="list-style-type: none"> <li>• Movable partition (1 configuration per day)</li> <li>• Room furnished with Viparis furniture : tables, chairs, 1 lectern, conference table, 1 stage, racks and hangers or coat rack, 1 flipchart. (1 configuration per day)</li> </ul> <p><b>CLEANING</b></p> <ul style="list-style-type: none"> <li>• Standard daily cleaning</li> <li>• Upkeep of toilets</li> </ul> <p><b>WIFI</b></p> <ul style="list-style-type: none"> <li>• Free Wi-Fi: 2.4 GHz access Up to 4 Mbps per connection</li> </ul> <p><b>SIGNAGE</b></p> <ul style="list-style-type: none"> <li>• A3 landscape format totem signpost (poster provided by the client)</li> </ul>	<p><b>TECHNICAL EQUIPMENT</b></p> <ul style="list-style-type: none"> <li>• Handling of fixed equipment (fixtures for hanging, patching, cabling, etc.)</li> <li>• Handling of audiovisual equipment (click &amp; share system included)</li> <li>• Override of your sound equipment to the venue emergency announcement system</li> </ul> <p><b>ELECTRICITY &amp; FLUID SUPPLY</b></p> <ul style="list-style-type: none"> <li>• Electrical connections (includes on-site electricians)</li> </ul> <p><b>FITTINGS &amp; FURNISHINGS</b></p> <ul style="list-style-type: none"> <li>• Change of the venue movable partition and/or furniture configuration during the day</li> </ul> <p><b>CLEANING</b></p> <ul style="list-style-type: none"> <li>• Supplementary cleaning and special cleaning services (catering in the meeting rooms...)</li> <li>• Dedicated toilets staff</li> <li>• Dedicated cleaning staff</li> </ul> <p><b>INTERNET, NETWORKS &amp; TELEPHONY</b></p> <ul style="list-style-type: none"> <li>• Wired internet connections</li> <li>• Customised Wi-Fi</li> <li>• Dedicated data networks (VLAN, WLAN)</li> <li>• Telephone lines and special lines</li> </ul> <p><b>SIGNAGE</b></p> <ul style="list-style-type: none"> <li>• Signage on infrastructure and existing supports</li> </ul>

# Conference rooms



## Hire of offices / Mezzanine central management office

Paris Expo Porte de Versailles has various spaces that can be set up as offices, press rooms or headquarters, for example.

Your Project Manager will be happy to review your requirements.

### SERVICES PROVIDED

This service includes **use of the premises** throughout your event.

6

## OPTIONAL SERVICES

At Paris Expo Porte de Versailles, your visitors and exhibitors are provided with the best possible welcome. The difference is in the details, and our teams are fully aware of this. This is why we can serve as intermediaries between you and our service providers – trusted partners who have been carefully selected for you!

### INSTALLATION

Our experience, our efficient logistical resources and our thorough knowledge of the site allow you to benefit from quality installations and services to provide your guests with a warm welcome.

#### STAND INSTALLATION

##### SERVICES PROVIDED

- Needle punch carpeting with protective polyane coating (a choice of colours)
- Melamine partitions (a choice of colours): aluminium structure
- Recto-verso sign (including company name and stand number)
- Minimum surface area of 9 sqm
- Optional: electrical connection and three-spot track lighting for 9 sqm of furnished stand

##### REFERENCES AND RATES

Price on request. Please contact your Project Manager, who can oversee the entirety of stand installation, from the design stage to completion.

#### FLORAL DECORATION

Your event – your colours. Embellish your installation with floral or plant decorations, a theme-based decor or a special atmosphere.

##### SERVICES PROVIDED

- Project design
- Hire of plants and accessories
- Décor installation and removal

##### REFERENCES AND RATES

Price on request. Please contact your Project Manager.



## AN OPTIONAL SERVICE

## YOUR STAND IN THE SPOTLIGHT

Showcasing your stand is essential for successful participation in a trade exhibition. To enhance your visibility and stand out from the competition, lighting up your products is one of the best ways to create a cosy and welcoming atmosphere and attract visitors to your stand.

Drawing on our experience in this area, VIPARIS offers a selection of lighting trusses with spotlights that adapt to the layout of your stand and contribute to your success.

Available in kits of different formats or as a customized service, all our offers include a Sustainable Development dimension and use only energy-efficient LED spotlights to reduce your electric power supply.

Hoist- or motor-based lifting solutions complete our offer if you wish to use your own lighting trusses or fasten structural elements at your stand.

## READY-TO-USE LIGHTING TRUSS KITS

- Available in four formats to adapt to the layout of your stand: linear, square, rectangular, circular
- Each format is available in different sizes and in warm or cool ambiance lighting
- Easy to order. Each kit includes slings, the lighting truss, LED spotlights, installation and removal, and spotlight adjustment
- Environmentally friendly. The kits are exclusively equipped with energy-efficient LED spotlights
- Compliant with regulatory and site safety standards

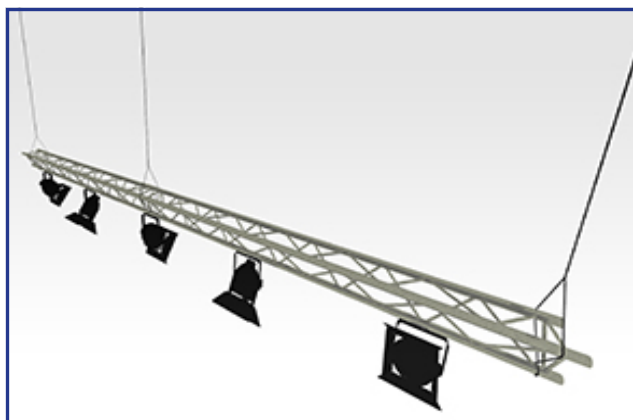
## CUSTOMIZED LIGHTING TRUSSES

- We work with specialised partners who have great expertise in showcasing products on display
- Adaptable to the specificities of your stand and the products on display based on your technical brief for the choice of dimensions, formats, and spotlight type
- Can be fitted at the same time as the slings to save time during installation
- Decorations or signs can also be integrated if necessary
- Compliant with regulatory and site safety standards

## READY-TO-USE LIGHTING TRUSS KITS

## LINEAR KITS

- ◆ Available in different lengths from 3 to 15 m
- ◆ Include:
  - 3 to 14 adjustable LED spotlights, with warm or cold light settings
  - The necessary slings
  - Installation, removal and adjustment of lights to your product displays
  - Certificate of regulatory compliance

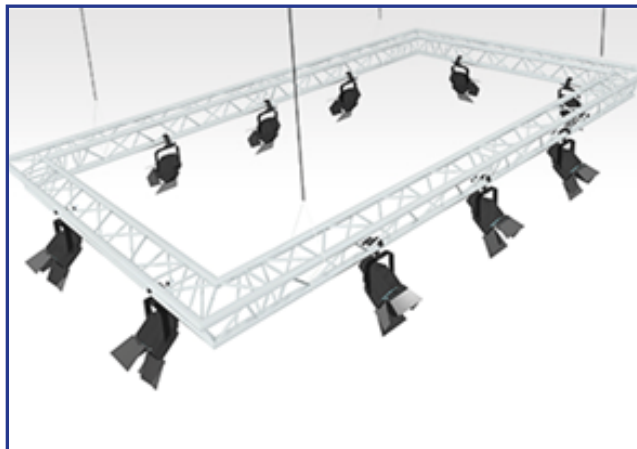


## AN OPTIONAL SERVICE

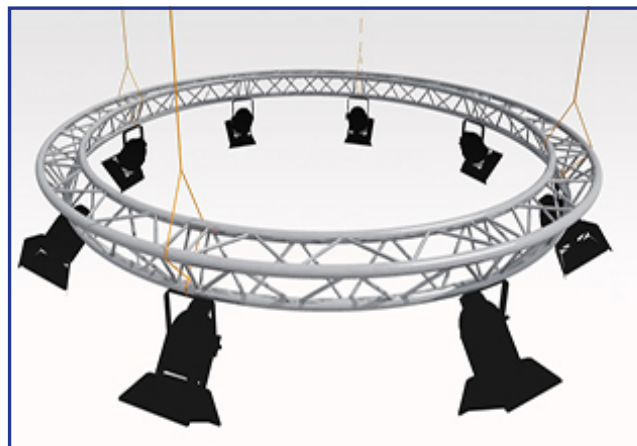
## YOUR STAND IN THE SPOTLIGHT

## READY-TO-USE LIGHTING TRUSS KITS

- ◆ Available in different sizes from 4 to 8 m sides
- ◆ Include:
  - From 6 to 16 LED spotlights depending on the chosen format, with warm or cold light settings
  - The necessary slings
  - Installation, removal and adjustment of lights to your product displays
  - Certificate of regulatory compliance



- ◆ Available in different sizes from 3 to 6m in diameter
- ◆ Include:
  - From 4 to 10 LED spotlights depending on the chosen diameter, with warm or cold light settings
  - The necessary slings
  - Installation, removal and adjustment of lights to your product displays
  - Certificate of regulatory compliance



## LIFTING SERVICES

## MANUAL CHAIN HOIST LIFTING

- Lifting service with 1 to 6 manual chain hoists
- Includes the hoists, the lifting service, securing the lifted structure, and removal.

## MOTOR HOIST LIFTING

- Lifting service with 1 to 10 motor hoists
- Includes motors with a capacity of 250 kg, the 2-stage lifting service (working height then final height), securing the lifted structure, and the reverse operation for removal.



## REFERENCES AND RATES

You can contact your Project Manager for any questions and information.

## AN OPTIONAL SERVICE

# Reception services

---

Let Viparis provide **your visitors, delegates and spectators** with an outstanding welcome. **Our customised offer** can help you manage your cloakrooms and reception areas.

## WHAT WE OFFER

- **Reception services:** dedicated spaces for welcoming guests
- **Cloakrooms:** permanent or temporary coat-check areas
- **Reception staff:** bilingual professionals to staff reception desks and cloakrooms

## THE BENEFITS

- **Turnkey reception and cloakroom services**
- **An experienced team of professionals to help you** organise your event
- We work with experienced **hospitality providers** with the highest customer service standards

## REFERENCES AND RATES

Optional service. Please contact your Project Manager for a quote



# Practical information

## ON-SITE FACILITIES

45

Central walkway  
Conference rooms  
ATM  
Toilets  
Wi-Fi  
Taxi  
Newsagent  
Caterers

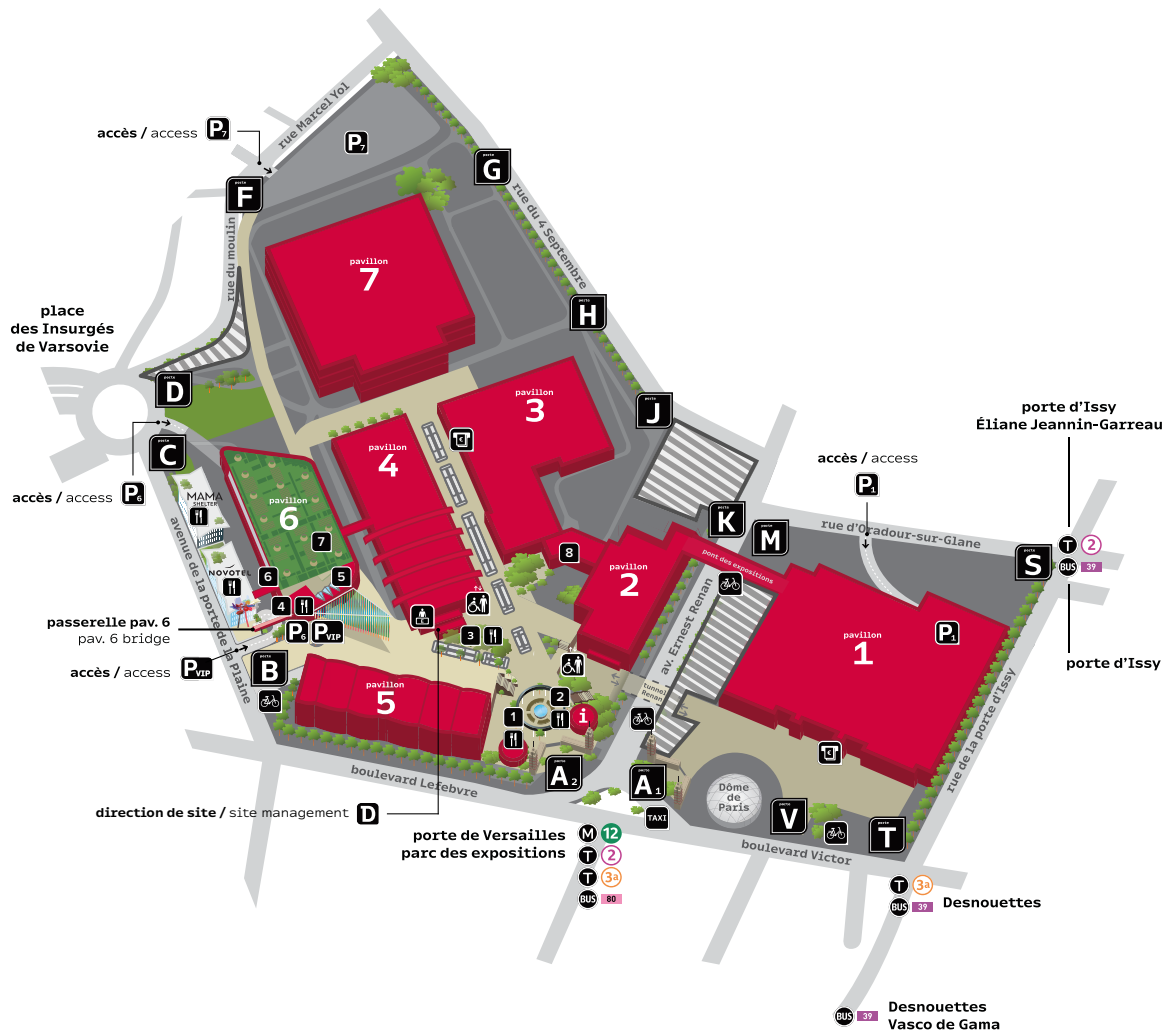
## NEARBY FACILITIES

48

Getting here and nearby services  
Persons with reduced mobility  
Access  
Nearby hotels

1

# ON-SITE FACILITIES



## i hub des services

réception  
receptiontoilettes  
toiletsespace bébé  
baby loungeascenseur  
liftdistributeur  
cashpointservice exposants  
exhibitors servicedistributeur  
cashpoint

presse &amp; tabac

parking  
car parkdirection du site  
site managementstation vélo  
bicycle point

## services services

## la restauration food and drink

## espaces divers other

1



2



3



4



Porte de Versailles

5



6



7



8

zone travaux  
work area



## CENTRAL WALKWAY

Reception areas, concierge service, restaurants, ATMs, lounge areas fitted with connected furniture, toilets with baby changing areas, etc.



## CONFERENCE ROOMS

Paris Expo Porte de Versailles has 46 conference rooms.



## ATMs

ATMs are available in the Service Centre, alongside Pavilion 3 and in front of Pavilion 1.



## TOILETS

Check one of the complex's many maps to find the closest washroom.



## Wi-Fi

There is free Wi-Fi access in all of the common areas at Paris Expo Porte de Versailles, as well as in the pavilions.



## TAXI

A taxi stand is located just outside the complex, next to Gate A1.



## NEWSAGENT

The Relay newsagent welcomes you in the Service Centre at Gate A2. You can find your favourite newspapers and magazines, as well as snacks and basic necessities (adapters, chargers, sticking plasters, wet wipes, etc.).



## CATERING

40 bars and restaurants in the pavilions as well as Mc Donald's, Paul and Le Perchoir.

For more information on the rules relating to catering, refer to the refer to the Lessee's Information Booklet.

# Caterers

---

**Catering is not paid for by the consumer (i.e. payable on invoice, no on-the-spot payment).**

**It may take the form of coffee breaks, cocktails, buffets, lunches, lunch boxes, technical catering, animation, snacks, refreshments, etc. offered by an organiser or exhibitor to its clients at a stand or in one of the site's rooms.**

There is no exclusivity on the Paris Expo Porte de Versailles site (excluding the Paris Convention Centre). All caterers are authorized to provide services on the site if they declare themselves to Viparis Porte de Versailles before the service is provided and finalize a one-time contract on the basis of a fee of 10% of the turnover of services in the Park. (catering, equipment and personnel).

HORETO also ensures «Catering» services and is subject to the same contractual conditions of fees.

The «Catering» services are subject to an exclusive listing for corporate events and congresses at the Paris Convention Centre and its adjoining areas.

**The list of referenced caterers is available on the [viparis.com](http://viparis.com) website.**



**For additional information, please contact Viparis's Catering  
Department: Myriam MOTTIN Tel.: +33 7 60 86 65 23  
[myriam.mottin@viparis.com](mailto:myriam.mottin@viparis.com)**

2

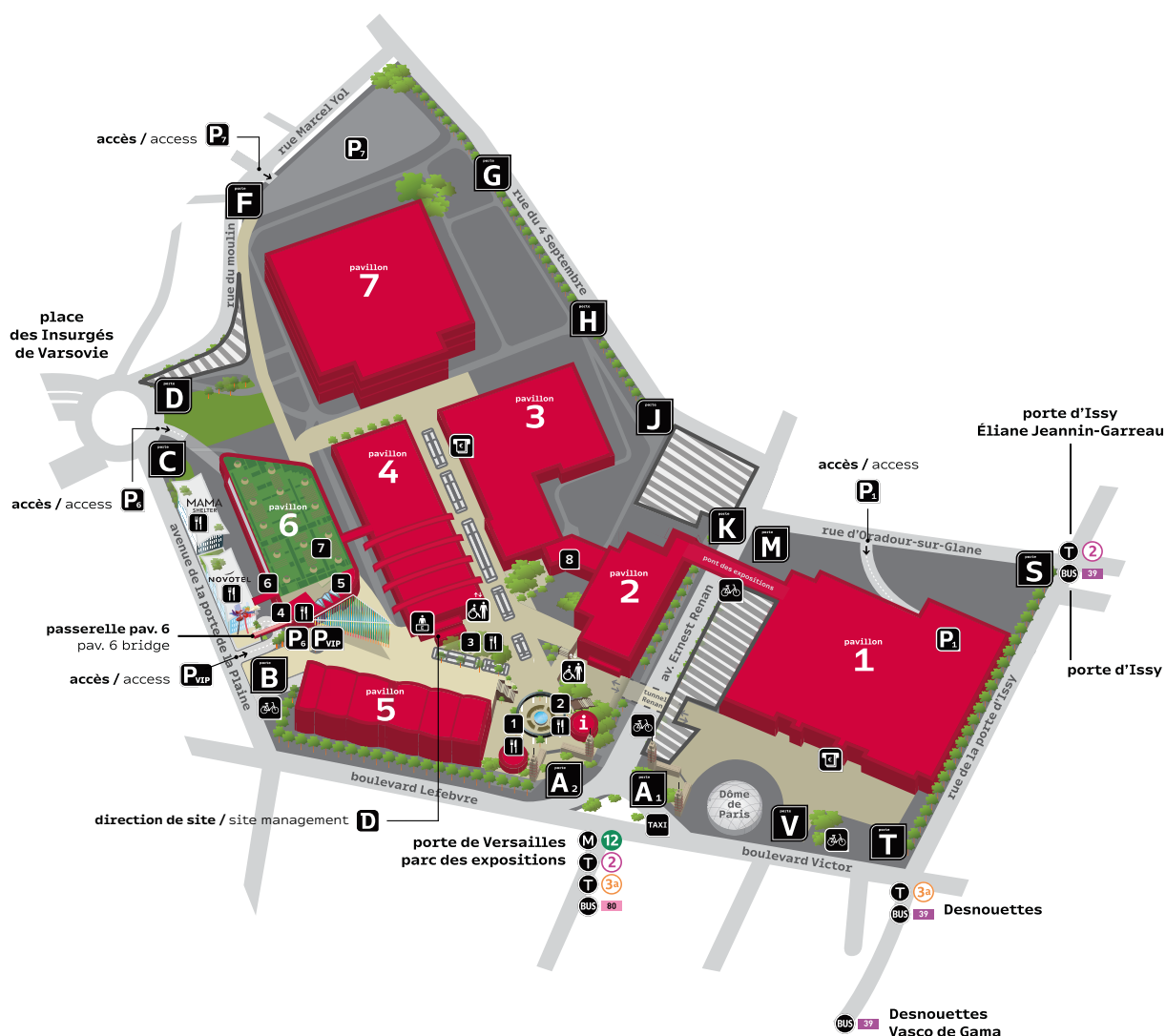
## NEARBY FACILITIES

### Getting there and nearby services

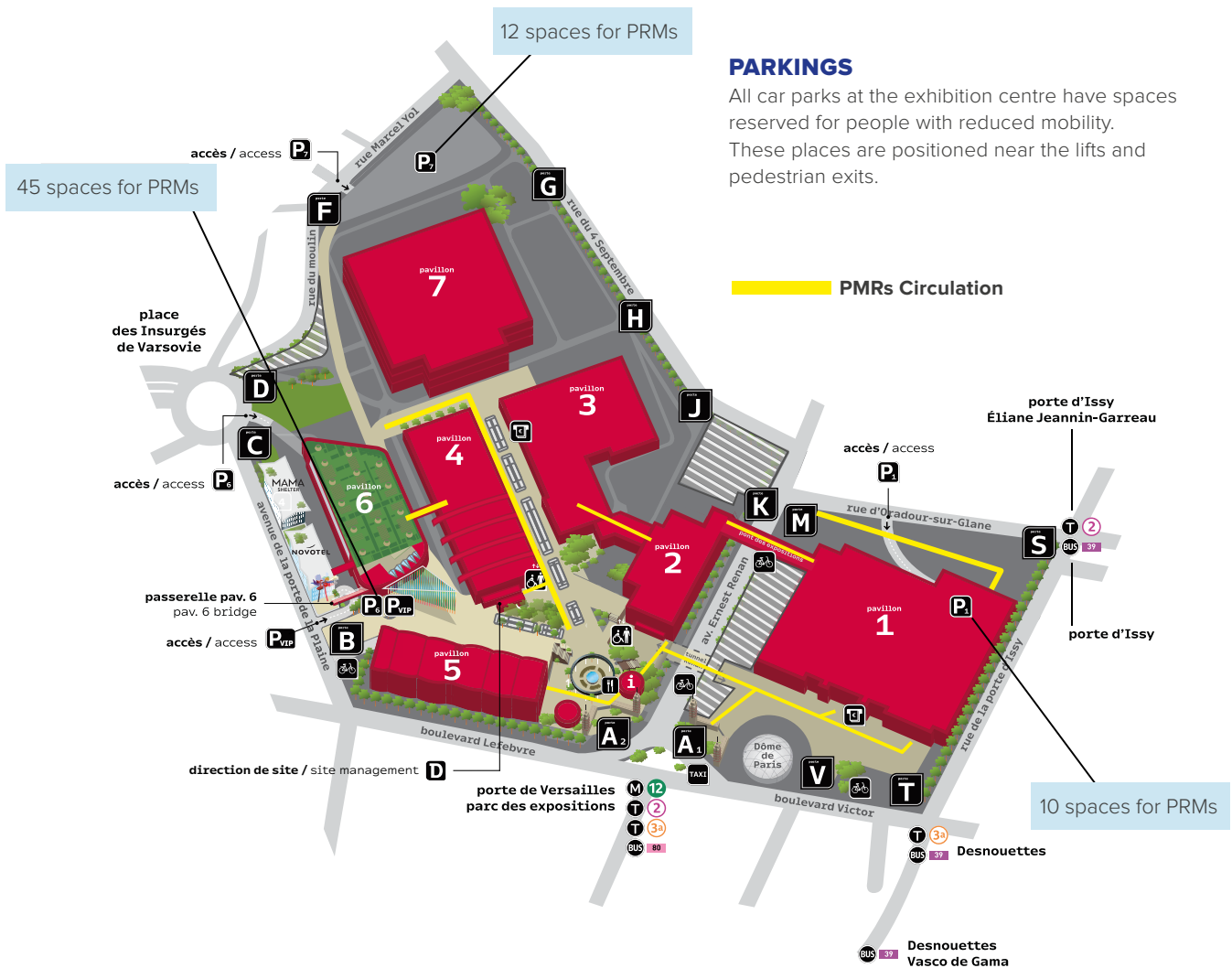
#### ENTRANCE

##### VEHICLE AND PEDESTRIAN ACCESS

High-definition versions of all site maps can be downloaded from our website [viparis.com](http://viparis.com)



# Persons with reduced mobility



## PARKINGS

All car parks at the exhibition centre have spaces reserved for people with reduced mobility. These places are positioned near the lifts and pedestrian exits.

## PMRs Circulation

## AT YOUR SERVICE

The reception staff at Paris Expo Porte de Versailles's main entrance (Gate A2) are happy to help you.

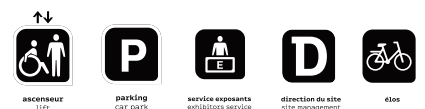
If you need assistance, the complex's Security Control Room is also open around the clock, including when the Service Centre is closed. If you need a wheelchair, you can borrow one for the length of your visit.\*

\* Subject to availability. A piece of ID is required.

## transports - transports



## services sur site - services



## hub des services



# Access

---

## DELIVERIES

### From the outer ring road

We recommend that you take the Porte de Brancion exit, and then follow signs to the complex.

### From the inner ring road

We recommend that you take the Porte de la Plaine exit, and then follow signs to the complex.

# Nearby services and hotels

---

## NEARBY SERVICES

With its unique location in the heart of Paris, Paris Expo Porte de Versailles is at the centre of a thriving neighbourhood offering a number of amenities, including restaurants, bars, a chemist's, shops, museums and much more. Your exhibitors and visitors can thus experience the best that Paris has to offer.



### USEFUL TIP

All of these services and their addresses are available on the Paris Expo Porte de Versailles web app: [www.parisexpoportedeversailles.com](http://www.parisexpoportedeversailles.com)

## NEARBY HOTELS

To provide the best possible welcome to Paris Expo Porte de Versailles for your conference attendees and visitors, there is a full and varied range of accommodation available near the complex. This includes more than twenty 3- and 4-star hotels and two unique concept hotels within the complex itself: a 205-room Mama Shelter and a 245-room Novotel.



### USEFUL TIP

A full list of all hotels in the vicinity of Paris Expo Porte de Versailles is available at [www.viparis.b-network.com/Index.aspx](http://www.viparis.b-network.com/Index.aspx)



# References and rates

## EXCLUSIVE MANDATORY SERVICES

52

On-site electrical support

## EXCLUSIVE OPTIONAL SERVICES

53

Public address system for the pavilions and override

Slings

Worksite electrical power

Electricity and Fluids

Telephony, Internet & Wi-Fi

Car parks and traffic flows

1

# EXCLUSIVE MANDATORY SERVICES

## Permanence

### ON-SITE ELECTRICAL SUPPORT

	Reference	Price in € excl. tax
Normal hours: from 7am to 8pm (except Sundays and holidays)	13200	61.23
Additional hours: from 8pm to 7am (7 days a week)	13201	126.1
Sundays and holidays from 7am to 8pm	13202	70.86

 BACK TO SERVICE DESCRIPTION

2

## EXCLUSIVE OPTIONAL SERVICES

### Public address and override

#### PUBLIC ADDRESS SYSTEM FOR THE PAVILIONS

	Reference	Unit price per sqm in € excl. tax
Public address system for the space	02200	0.2878

#### VERRIDE

	Reference	Unit price per sqm in € excl. tax
Public address system override	02006	555.29

[BACK TO SERVICE DESCRIPTION](#)

### Slings

	Reference	Price in € excl. tax
Slings (from 1 to 6) – per item	38101	151.51
Slings (from 7 to 12) – per item	38102	147.12
Slings (more than 12) – per item	38103	137.06
Change in height of sling	38117	75.69
3 to 4 kW electrical power supplied to a sling*	38104	133.68
6 to 10 kW electrical power supplied to a sling*	38105	174.13
20 kW electrical power supplied to a sling*	38106	207.12
Sling travel (price per sling)	38115	151.51

\* Connection, power supply and repositioning not included.



[BACK TO SERVICE DESCRIPTION](#)

#### ROTATING DISPLAYS AND POWER SUPPLY

	Reference	Price in € excl. tax
Rotating display – flat rate (includes 3 slings and electrical cabling)	38107	572.02



[BACK TO SERVICE DESCRIPTION](#)

# Worksite electrical power

	Rental duration*	1/2 day	1 day	2 days	3 days	4 days	5 days
<b>3KW ELECTRICAL ENERGY WORKSITE PER DAY</b>	Reference	1500301	150031	150032	150033	150034	150035
	Price in € excl. tax	41.38	85.85	165.57	248.37	331.15	413.96
<b>4KW ELECTRICAL ENERGY WORKSITE PER DAY</b>	Reference	1600401	160041	160042	160043	160044	160045
	Price in € excl. tax	48.28	100.17	193.18	289.77	386.37	482.98
<b>6KW ELECTRICAL ENERGY WORKSITE PER DAY</b>	Reference	1600601	160061	160062	160063	160064	160065
	Price in € excl. tax	63.22	131.14	252.91	379.36	505.84	632.30
<b>8KW ELECTRICAL ENERGY WORKSITE PER DAY</b>	Reference	1600801	160081	160082	160083	160084	160085
	Price in € excl. tax	75.82	157.29	303.38	455.07	606.78	758.47
<b>10KW ELECTRICAL ENERGY WORKSITE PER DAY</b>	Reference	1601001	160101	160102	160103	160104	160105
	Price in € excl. tax	87.29	185.98	358.70	538.06	717.42	896.76
<b>20KW ELECTRICAL ENERGY WORKSITE PER DAY</b>	Reference	1602001	160201	160202	160203	160204	160205
	Price in € excl. tax	129.04	267.66	516.24	774.38	1032.49	1290.63
<b>30KW ELECTRICAL ENERGY WORKSITE PER DAY</b>	Reference	1603001	160301	160302	160303	160304	160305
	Price in € excl. tax	159.68	331.22	638.81	958.24	1277.64	1597.06
<b>40KW ELECTRICAL ENERGY WORKSITE PER DAY</b>	Reference	1604001	160401	160402	160403	160404	160405
	Price in € excl. tax	185.72	385.20	742.91	1114.38	1485.84	1857.31
<b>60KW ELECTRICAL ENERGY WORKSITE PER DAY</b>	Référence	1606001	160601	160602	160603	160604	160605
	Price in € excl. tax	233.96	485.26	935.89	1403.86	1871.82	2339.79
<b>80KW ELECTRICAL ENERGY WORKSITE PER DAY</b>	Reference	1608001	160801	160802	160803	160804	160805
	Price in € excl. tax	311.87	646.88	1247.60	1871.41	2495.23	3119.04

\* For an additional rental period of 5 days, contact your project manager.

# Electricity & Fluid supply

## ELECTRICAL CONNECTIONS FOR ORGANISERS

	Reference	Price in € excl. tax
1 kW permanent power supply (4 amp), consumption not incl.	03001	351.02
3 kW permanent power supply (4 amp), consumption not incl.	03003	501.1
4 kW permanent power supply (6 amp), consumption not incl.	04004	617.85
6 kW permanent power supply (9 amp), consumption not incl.	04006	796.42
8 kW permanent power supply (12 amp), consumption not incl.	04008	834.12
10 kW permanent power supply (15 amp), consumption not incl.	04010	917.00
20 kW permanent power supply (32 amp), consumption not incl.	04020	1002.06
30 kW permanent power supply (50 amp), consumption not incl.	04030	1090.25
40 kW permanent power supply (63 amp), consumption not incl.	04040	1187.74
60 kW permanent power supply (100 amp), consumption not incl.	04060	1409.5
80 kW permanent power supply (125 amp), consumption not incl.	04080	1588.52
100 kW permanent power supply (144 amp), consumption not incl.	04100	1886.36
125 kW permanent power supply (200 amp), consumption not incl.	04125	2644.21
Repositioning of power box up to 20 kW	14001	110,75


[BACK TO SERVICE DESCRIPTION](#)

## OUTDOORS ELECTRICAL CONNECTIONS

	Reference	Price in € excl. tax
3 kW permanent power supply (4 amp), consumption not incl. outdoors	04003EXT	618.52
4 kW permanent power supply (6 amp), consumption not incl. outdoors	04004EXT	660.83
6 kW permanent power supply (9 amp), consumption not incl. outdoors	04006EXT	840.66
8 kW permanent power supply (12 amp), consumption not incl. outdoors	04008EXT	878.63
10 kW permanent power supply (15 amp), consumption not incl. outdoors	040010EXT	962.07
20 kW permanent power supply (32 amp), consumption not incl. outdoors	040020EXT	1 047.74
30 kW permanent power supply (50 amp), consumption not incl. outdoors	040030EXT	1 158.71
40 kW permanent power supply (63 amp), consumption not incl. outdoors	040040EXT	1 256.90
60 kW permanent power supply (100 amp), consumption not incl. outdoors	040060EXT	1 576.63
80 kW permanent power supply (125 amp), consumption not incl. outdoors	040080EXT	1 756.93
100 kW permanent power supply (144 amp), consumption not incl. outdoors	0400100EXT	2 149.89
125 kW permanent power supply (200 amp), consumption not incl. outdoors	0400125EXT	2 913.00
150 kW permanent power supply (250 amp), consumption not incl. outdoors	0400150EXT	3 368.01


[RETOUR VERS LA PRESTATION](#)

# Electricity & Fluid supply

## ELECTRICAL WORK FOLLOWING CONNECTION

	Reference	Price in € excl. tax
240V 10/16 A socket + earth	14021	42.3
1 3-phase P17 32 A male socket kit	14080	30.97
3-phase P17 32 A male socket kit + 1 m of cable	14081	167.15
3-phase P 17 32 A male socket kit + 1 m of cable + 16 A 230 V 3-socket protection box	14082	267.92
3-socket extension cable	14029	18.49
6-outlet distribution board	14086	301.2
12-outlet distribution board	14087	476.47

\* Rates valid from 1 to 5 days, for longer periods contact your Project Manager.



[BACK TO SERVICE DESCRIPTION](#)

## WATER CONNECTIONS

	Référence 32003	Référence 32100
Length of event (days open to the public)	15/21 diameter inlet pipe + water consumption + connection Price in € excl. tax*	Water inlet Excluding water consumption Price in € excl. tax**
1 day	700.28	264.50
2 days	704.89	269.15
3 days	709.51	273.79
4 days	714.12	278.43
5 days	718.74	283.08

\* For periods longer than 5 days, please contact your Project Manager.

	Référence	Price in € excl. tax
Repositioning of water connection	32301	279.00



[BACK TO SERVICE DESCRIPTION](#)

## ADDITIONAL EQUIPMENT HIRE

	Reference	Price in € excl. tax
Single-sink unit (installation + connection)	32200	156.62
Double-sink unit (installation + connection)	32201	191.98
Free-standing sink	32217	195.12
15-litre water-heater (installation + connection)	32205	217.85
100-litre water-heater (installation + connection)	32206	287.21
200-litre water-heater (installation + connection)	32207	333.97



[BACK TO SERVICE DESCRIPTION](#)

# Telephony, Internet and Wi-Fi

## TELECOMMUNICATION

### WIRED TELEPHONY AND OPTIONS

	Reference	Price in € excl. tax from 1 to 3 days	Price in € excl. tax over 4 days
Telephone line IP + station*	92100	217.48	238.25

\*Includes rental, installation, removal and consumption

\*\*For the operation of the VSE, a wired internet line is mandatory.



BACK TO SERVICE DESCRIPTION

## INTERNET AND NETWORKS

### ETHERNET CONNECTIONS AND OPTIONS

	Reference	Price in € excl. tax from 1 to 3 days	Price in € excl. tax over 4 days
4 Mbps DSL connection	92436	368.15	423.87
6 Mbps DSL connection	51457	662.67	762.17
10 Mbps DSL connection	92077	1270.61	1460.66
20 Mbps DSL connection	92078	2540.23	2921.32
30 Mbps DSL connection	51442	3619.81	4163.08
40 Mbps DSL connection	51443	4584.96	5273.5
50 Mbps DSL connection	51415	5445.63	6261.53
100 Mbps DSL connection	51448	6668.49	7668.46
> 100 Mbps DSL connection	51501	Price on request	
Cabling (requiring a switch)*	92594	112.4	
4-port switch	92592	51.75	
8-port switch	51383	66.24	
16-port switch	92246	93.16	
24-port switch	92599	124.21	

\* Switch not included



BACK TO SERVICE DESCRIPTION

# Telephony, Internet and Wi-Fi

## HOTSPOT WI-FI

	Reference	Price in € excl. tax
HIGH-DENSITY HOTSPOT WI-FI - PAVILION 1	92620	10904.78
HIGH-DENSITY HOTSPOT WI-FI - HALL 1.1	92621	2780.49
HIGH-DENSITY HOTSPOT WI-FI - HALL 1.2	92622	2881.9
HIGH-DENSITY HOTSPOT WI-FI - HALL 1.3	92623	5242.37
HIGH-DENSITY HOTSPOT WI-FI - HALL 2.1	92624	920.37
HIGH-DENSITY HOTSPOT WI-FI - HALL 2.2	92625	791.02
HIGH-DENSITY HOTSPOT WI-FI - HALL 2.3	92626	562.17
HIGH-DENSITY HOTSPOT WI-FI - HALLS 2.2 & 2.3	92627	920.37
HIGH-DENSITY HOTSPOT WI-FI - PAVILION 3	92628	2094.47
HIGH-DENSITY HOTSPOT WI-FI - HALL 3.1	92629	562.17
HIGH-DENSITY HOTSPOT WI-FI - HALL 3.2	92630	1532.3
HIGH-DENSITY HOTSPOT WI-FI - PAVILION 4	92631	4690.22
HIGH-DENSITY HOTSPOT WI-FI - HALL 4.1	92632	1517.25
HIGH-DENSITY HOTSPOT WI-FI - HALL 4.2	92633	1450.7
HIGH-DENSITY HOTSPOT WI-FI - HALL 4.3	92634	1722.26
HIGH-DENSITY HOTSPOT WI-FI - PAVILION 5	92635	4450.58
HIGH-DENSITY HOTSPOT WI-FI - HALL 5.1	92636	1360.5
HIGH-DENSITY HOTSPOT WI-FI - HALL 5.2	92637	1460.45
HIGH-DENSITY HOTSPOT WI-FI - HALL 5.3	92638	1629.63
HIGH-DENSITY HOTSPOT WI-FI - PAVILION 6	92639	3737.07
HIGH-DENSITY HOTSPOT WI-FI - HALL 7.1	51354	3915.21
HIGH-DENSITY HOTSPOT WI-FI - HALL 7.2	51356	6526.86
HIGH-DENSITY HOTSPOT WI-FI - HALL 7.3	51376	6526.86

## IT NETWORKS

To make several devices communicate with each other (PCs, printers, etc.) beyond the cabling package, you will need to set up a virtual local area network (VLAN). Setting up a VLAN requires at least 1 LAN zone and 1 LAN point. If you need Internet on the VLAN, you will need to add bandwidth.

	Reference	Price in € (excl. tax)
Creation of a wired VLAN	51371	363.65
LAN zone (1 pavilion = 1 zone)	51384	748.17
LAN point	92253	156.59
Bandwidth	voir tarifs internet filaire	


[BACK TO SERVICE DESCRIPTION](#)

# Telephony, Internet and Wi-Fi

## WI-FI

### WI-FI EXPERT / WI-FI EXPERT SECURE

	Reference	Price in € excl. tax from 1 to 3 days	Price in € excl. tax over 4 days
Wi-Fi Expert Network 5 GHz	92400	100.47	
Wi-Fi Expert Secure 4 8 Mbps internet access with 4 Wi-Fi connections and an ethernet connection	51452	644.76	850.72
Wi-Fi Expert Secure 8 12 Mbps internet access with 8 Wi-Fi connections and an ethernet connection	51459	1209.92	1459.66
Wi-Fi Expert Secure 20 20 Mbps internet access with 20 Wi-Fi connections and an ethernet connection	51454	2001.94	2283.52
Wi-Fi adaptor: USB key	92444	77.48	

### WI-FI PRIVATIF

	Reference	Price in € excl. tax from 1 to 3 days	Price in € excl. tax over 4 days
Supply and installation of Wi-Fi antenna configuration Height <3M	92043	455.39	
Supply and installation of Wi-Fi antenna configuration Height >3M	92045	691.19	


[RETOUR VERS LA PRESTATION](#)

# Car parks and traffic flows

## VIP CAR PARKS

	Reference	Price in € excl. tax / per day
VIP marking per vehicle	30074	18.57
Golf cart (as of 40 VIP parking spaces purchased)	-	Price on request

## EXHIBITOR PARKING

Parking	Price in € excl. tax / per day
Passenger vehicle	18.57
Light commercial vehicle under 3.5 tons (Heliport / Bercy)	32.81
HGV under 6 tons (Heliport / Bercy)	38.43
HGV over 6 tons (Heliport / Bercy)	43.4

## BARRIER HIRE

	Reference	Price in € excl. tax
Barrier installation according to a pre-established plan	-	Price on request


[BACK TO SERVICE DESCRIPTION](#)



Viparis, 2 place de la Porte Maillot • 75017 Paris  
Tel : +33 (0)1 40 68 22 22

### Our sites:

CNIT Forest • Espace Champerret • Espace Grande Arche  
Hôtel Salomon de Rothschild • La Serre • Les Salles du Carrousel • Palais des Congrès d'Issy  
Palais des Congrès de Paris • Paris Convention Centre  
Paris Expo Porte de Versailles • Paris Le Bourget • Paris Nord Villepinte

[www.viparis.com](http://www.viparis.com)