



Paris Le Bourget

WELCOME

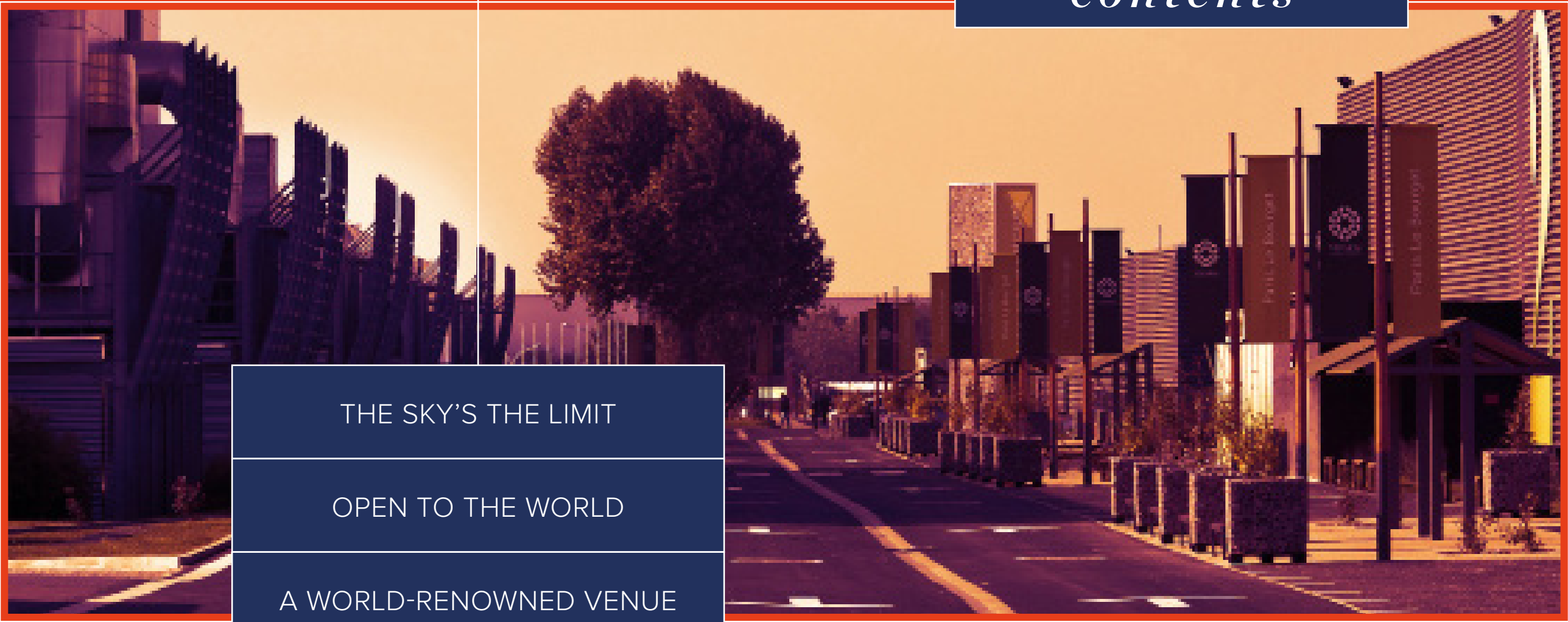


contents

THE SKY'S THE LIMIT

OPEN TO THE WORLD

A WORLD-RENNOWNED VENUE



THE SKY'S THE LIMIT

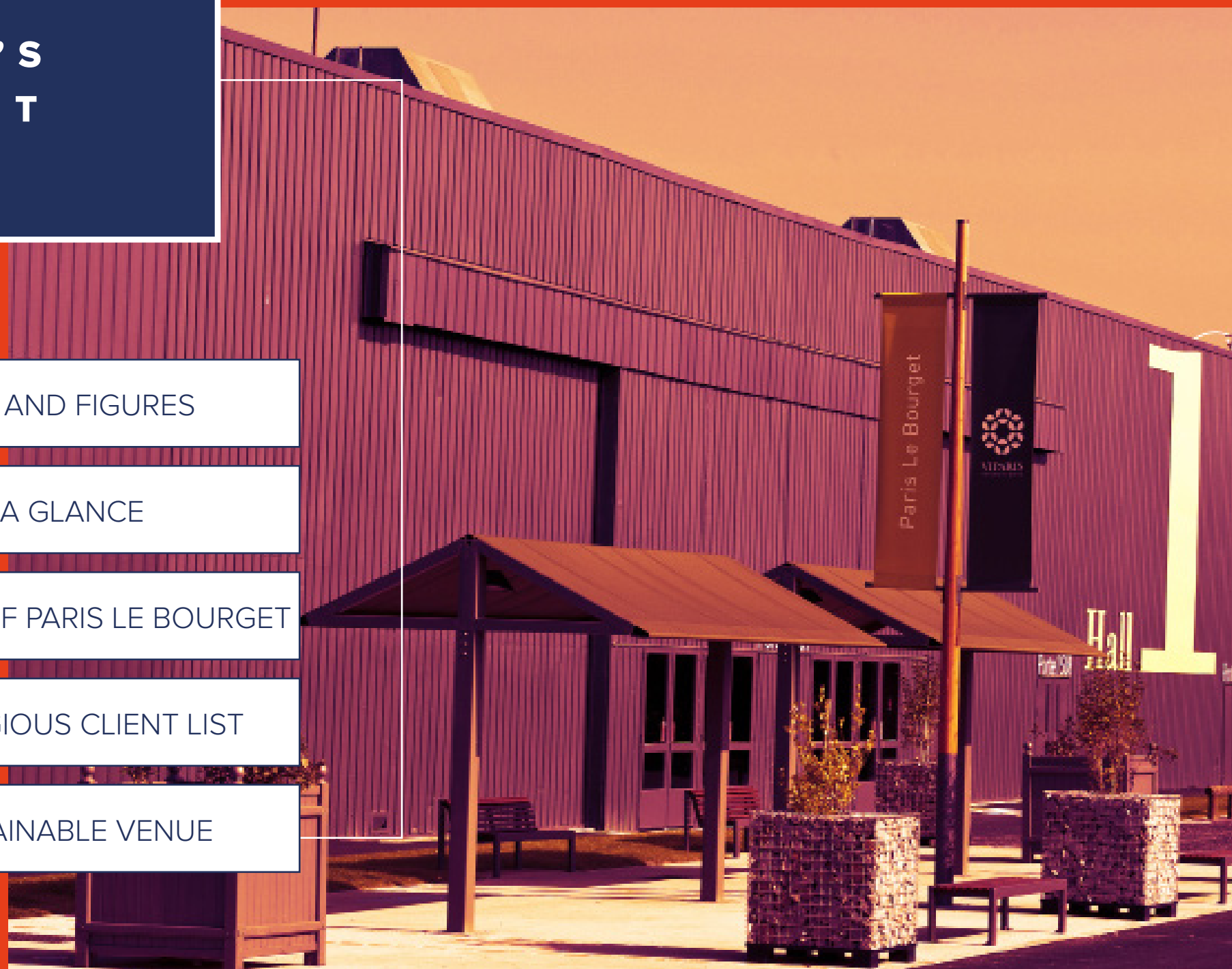
FACTS AND FIGURES

AT A GLANCE

THE STORY OF PARIS LE BOURGET

A PRESTIGIOUS CLIENT LIST

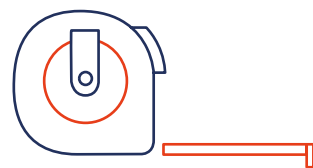
A SUSTAINABLE VENUE



FACTS AND FIGURES



80 000 sq.m



OF INDOOR EXHIBITION AREAS

FRANCE'S 3RD LARGEST EXHIBITION COMPLEX



8 000

PARKING PLACES



1 million

VISITORS EACH YEAR



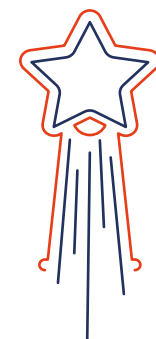
Number one

BUSINESS AVIATION AIRPORT IN EUROPE

HOSTING ONE OF THE WORLD'S LARGEST AIR SHOWS
EVERY TWO YEARS

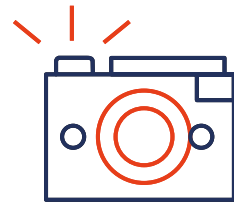
25 hectares

OF GREEN SPACES,
WHICH CAN BE USED AS
OUTSIDE EXHIBITION SPACES



30 EVENTS
EACH YEAR

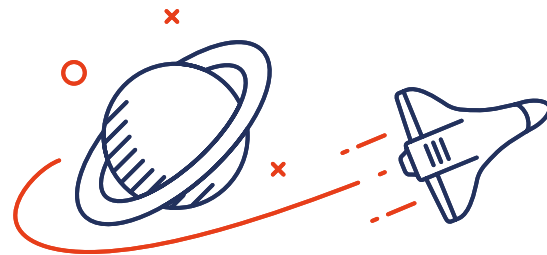
AT A GLANCE



A WITNESS
**TO OUTSTANDING
EVENTS**



A VENUE
**OPEN TO
THE WORLD**



SET IN A SITE
**DEVOTED TO AERONAUTIC
EXCELLENCE**



**INVITING GREEN
SPACES**

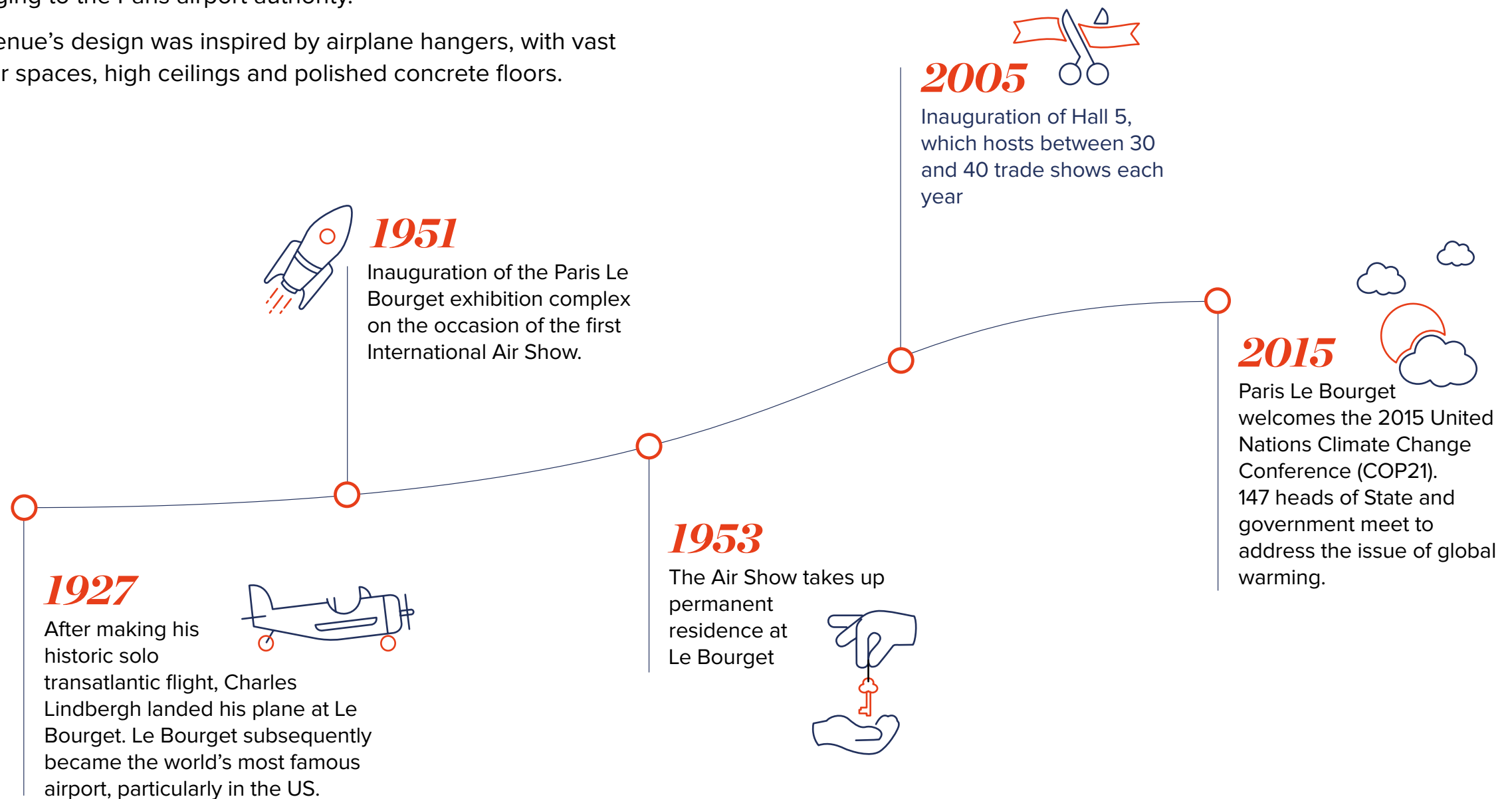
AND A WELCOMING
EXHIBITION COMPLEX

THE STORY OF PARIS LE BOURGET



From the very beginning, the history of Paris Le Bourget has been closely connected with the history of aviation. It was built by the French Aeronautic and Aerospace Consortium (GIFAS) on land belonging to the Paris airport authority.

The venue's design was inspired by airplane hangers, with vast interior spaces, high ceilings and polished concrete floors.



A PRESTIGIOUS CLIENT LIST

AERONAUTICS



Every two years since 1953, Le Bourget has hosted the **Paris Air Show**. The general public is invited to attend for several days, but the event is primarily a meeting place for aeronautic and aerospace professionals from around the world.

CULTURE



Each year, the **Fête de l'Humanité** offers an unforgettable schedule of encounters, culture, concerts and discussions. The 2015 edition, which was held at Le Bourget, featured stars such as Manu Chao, Texas and the Chedid family.



ENVIRONNEMENT

After 40 days of preparations, Paris Le Bourget hosted **COP21**, which brought together delegates from nearly 195 countries. The result was the so-called «Paris Agreement», a historic accord for the future of the planet.



AUTOMOBILE

Paris Le Bourget is a great venue for car launches, and Automédon (a classic car show) has been held there since 2001. The venue's vast, light-filled spaces provide the perfect setting for more than 1,000 vintage cars and motorcycles.

DID YOU KNOW?

In July 1980, more than 50,000 spectators flocked to Le Bourget for a Bob Marley concert – a genuine Woodstock «à la française»! More people attended this concert than came to see the Pope, who had greeted the crowds at the same site just a few weeks earlier.

A SUSTAINABLE VENUE

Viparis is the world's first event management firm to be awarded ISO 20121 certification (the strictest international standard for sustainable events management) on such a large scale – all Viparis venues are covered by this certification.

Our sustainable development policy is embodied in a set of concrete actions around three major goals.

1 *Improving energy efficiency*
WE'RE CUTTING OUR ENERGY USE 25% BY 2020

2 *Developing a sustainable procurement policy*
BY INCLUDING CSR CRITERIA IN EVERY NEW CALLS FOR TENDER AND ALL CONTRACTS ISSUED BY THE PURCHASING DEPARTMENT

3 *Promoting responsible behaviour*
BY MOBILISING ALL OF OUR STAKEHOLDERS AND EDUCATING THEM CONCERNING BEST PRACTICES



A SUSTAINABLE VENUE



Keeping printing to a minimum

- + Paperless parking payment machines
- + Recyclable tarps for signage



Lowering energy use

- + Kélipse power boxes allow users to pool and organise energy consumption (power levels starting at 1kWh)
- + Taps fitted with aerators in every washroom
- + Installation of a condensing boiler



Green waste recovery

- + All spaces equipped with duo recycling bins for visitor waste
- + At the organiser's request, sorting bins can be made available to exhibitors



Complete accessibility

- + 100% accessible for people with reduced mobility



A commitment to biodiversity

- + Installation of 3 rooftop beehives

OPEN TO
THE WORLD

A VERY
ACCESSIBLE VENUE

A CONTEMPORARY
SETTING



A VERY ACCESSIBLE VENUE

Paris Le Bourget is located about ten kilometres outside Paris, close to Le Bourget airport and only 15 minutes from Roissy Charles-de-Gaulle airport.

BY PUBLIC TRANSPORT

- Roissy Charles-de-Gaulle airport
- Le Bourget station
- Bus stop : Michelet - Parc d'Expositions
 - Parc d'expositions - Gonesse ZAC des Tulipes Nord
 - Paris—Gare de l'Est - Roissypole

BY CAR

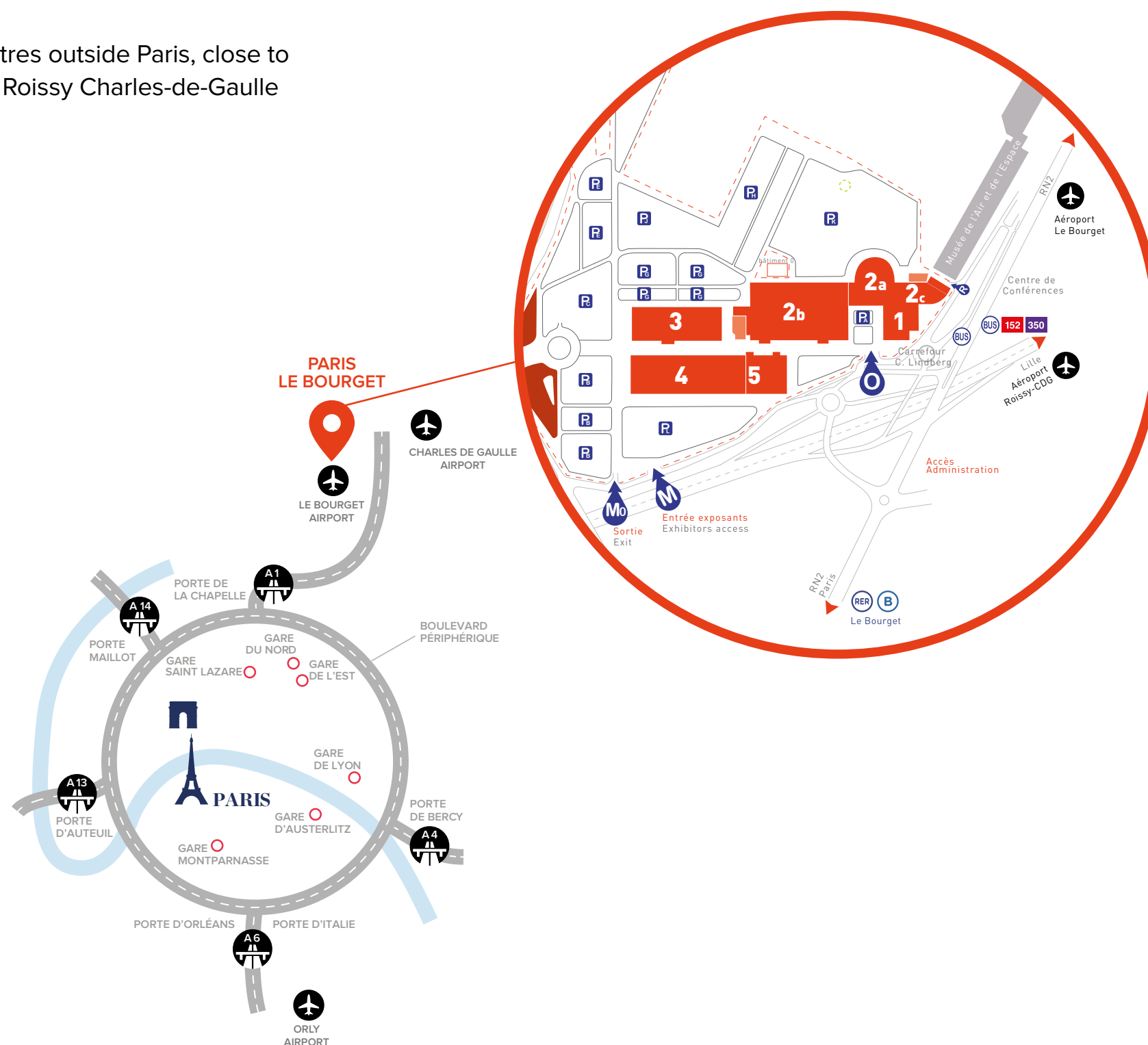
10 minutes from Paris

A1 motorway, exit 5, «Le Bourget»

3 motorways in proximity to the complex

PARKING

- 8,000 on-site parking spaces
- 5,000 additional spaces at Aire des Vents



A CONTEMPORARY SETTING



Accessible and open to the world

Originally built on land belonging to the Paris airport authority, the Paris Le Bourget exhibition complex is located next door to Europe's largest business aviation airport.

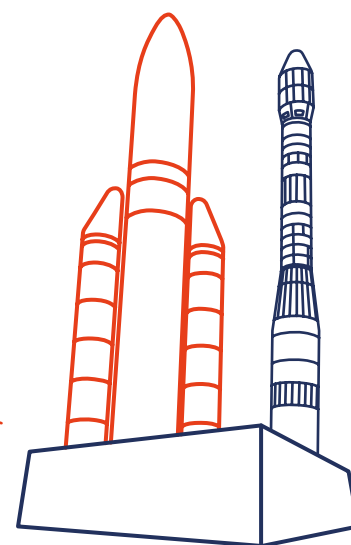
There are numerous 3- and 4-star hotels close by, which can easily accommodate all of the venue's French and international visitors.



Green spaces and leisure activities

For those who enjoy less aerial pursuits, the «Aire des Vents» test centre and private race track, located next to the exhibition complex, is an ideal venue for automotive-related events and demonstrations.

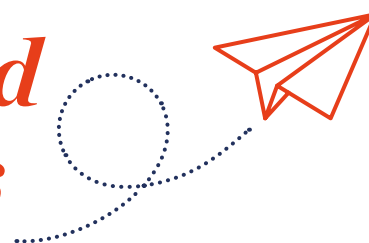
Not far away, visitors can enjoy a stroll in the beautiful Parc de la Courneuve, a Natura 2000 site.



Art and history

Near the complex, the Musée de l'Air et de l'Espace offers a unique glimpse into the history of aviation. An immense historical and cultural heritage awaits visitors: documents, art works and aeronautic and aerospace objects from around the world.

A stone's throw from Le Bourget airport, contemporary art lovers will enjoy the Gagosian Gallery – two floors totalling 1,650 m2 that house monumental art works such as Anselm Kiefer's Morgenthau Plan.



A
WORLD-RENOWNED
VENUE

THE EXTERIOR

THE INTERIOR

VENUE PLAN

HALL 1

HALLS 2A & 2C

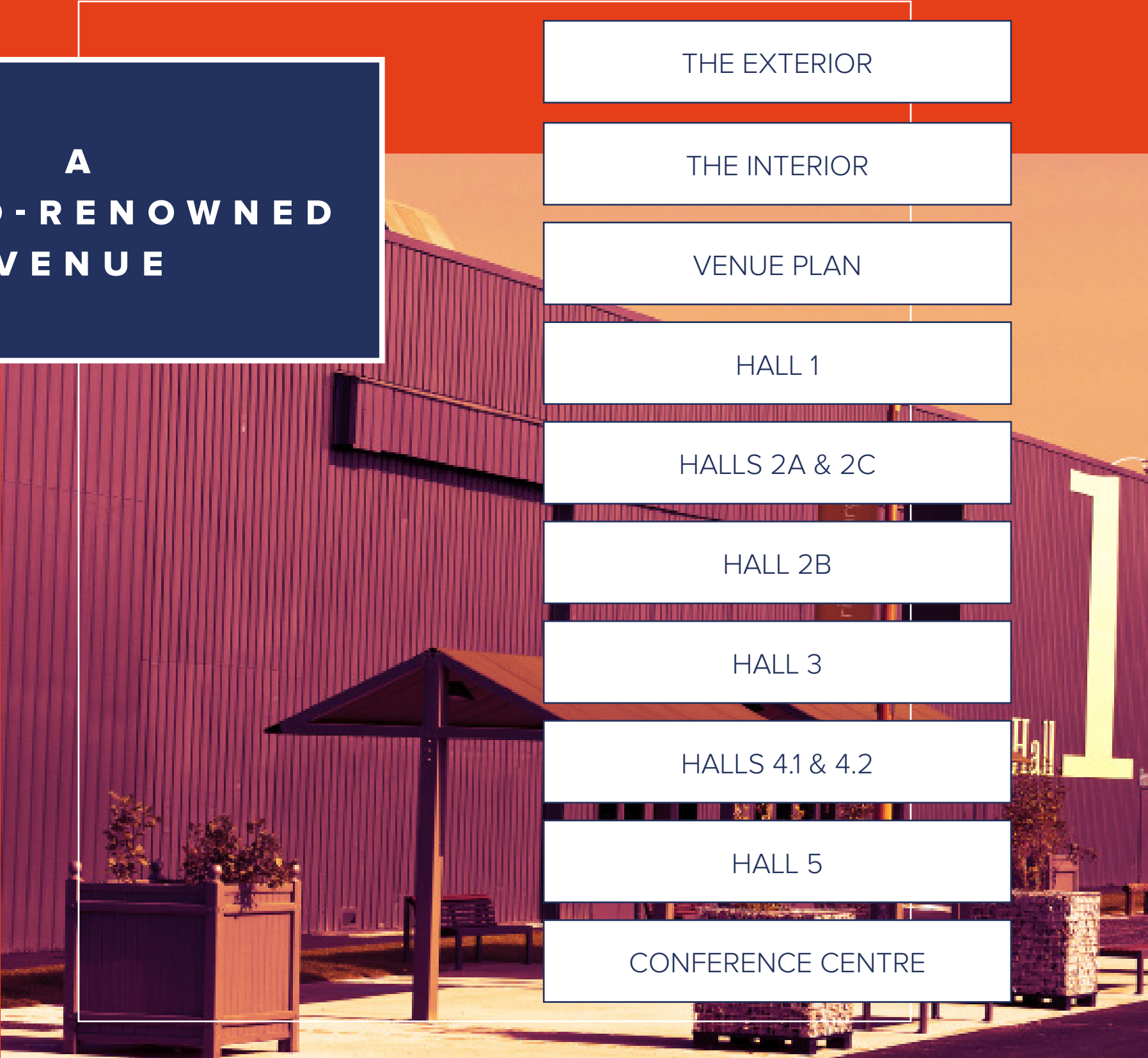
HALL 2B

HALL 3

HALLS 4.1 & 4.2

HALL 5

CONFERENCE CENTRE



THE EXTERIOR

A MODERN VILLAGE IN A GREEN SETTING

Although a modern exhibition complex, Paris Le Bourget has a **village feeling** – it is a calm, welcoming place that is close to nature. It is a **spacious, airy and luminous** site capable of hosting large-scale events, and its **250,000 sq.m** of exterior spaces are ideal for open-air demonstrations.

The central walkway, reminiscent of an city boulevard, is the nerve centre of the venue, **a welcoming presence** that guides visitors to Paris Le Bourget's various spaces.

The venue's logistics are world-class: contemporary fittings and signage, **8,000 parking spaces**, ATMs and a cutting-edge emergency medical station.



THE INTERIOR

FULLY EQUIPPED AND MULTI-PURPOSE

Each of Paris Le Bourget's **five halls, constructed between 1951 and 2005**, is a witness to a different period of history, which makes it a unique architectural ensemble.

Offering a total of **80,000 sq.m of interior spaces**, all halls provide the same amenities, but each has its own special characteristics.

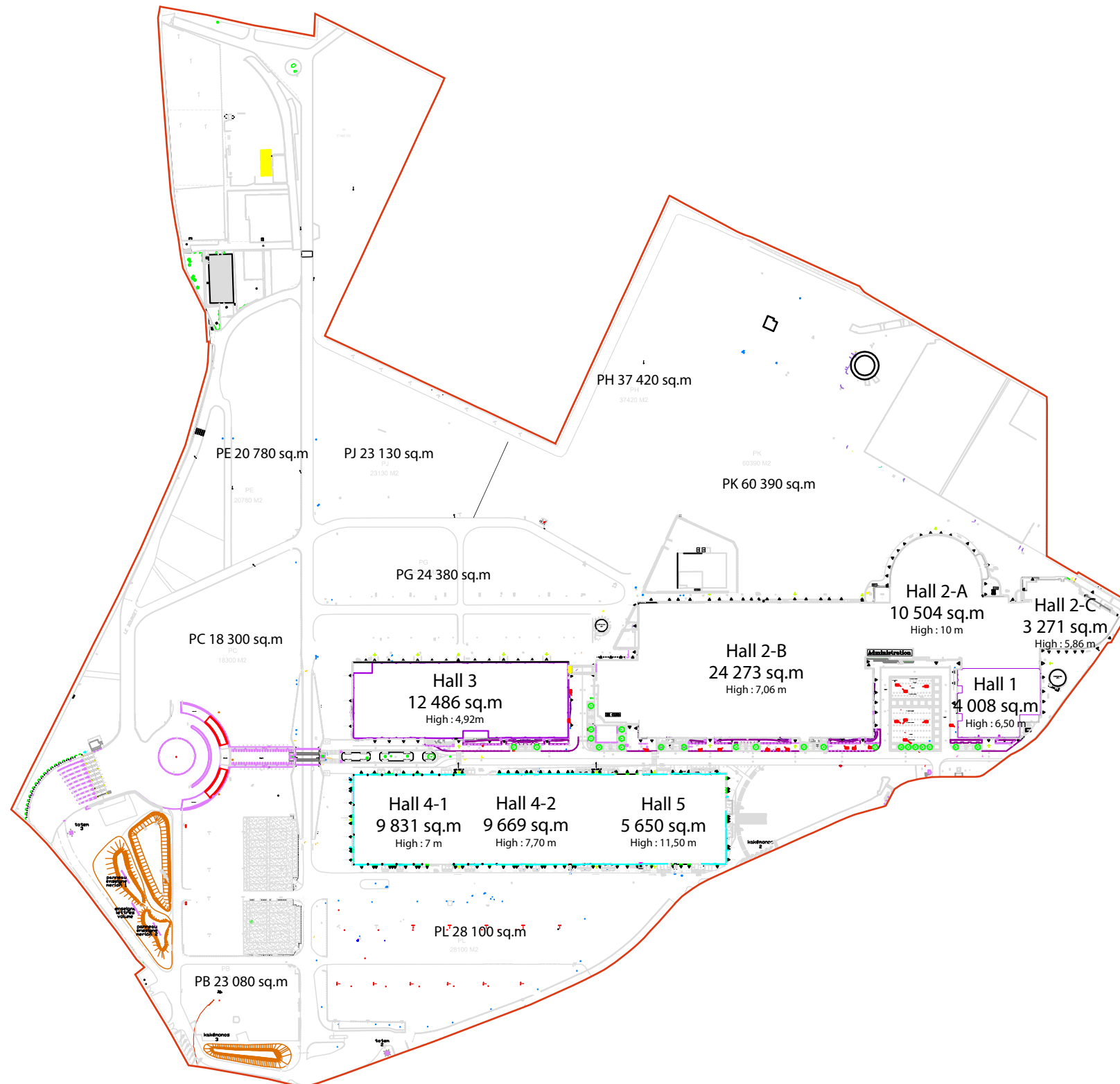
All have a resolutely contemporary feel – polished concrete floors in most areas, modern industrial design and light shafts – and each space offers visitors the same excellent level of comfort.

There are also **6 meeting rooms** and a conference centre with a 200-seat auditorium. All spaces are ground-level and outfitted to accommodate visitors with reduced mobility.

Finally, visitors to Paris Le Bourget will appreciate the **many takeaway food possibilities** as well as a restaurant located at the centre of the venue.



VENUE PLAN





Hall 1 is a striking venue of over 4,000 sq.m that offers visitors a quiet, welcoming atmosphere. Fitted with light wells and glass doors, Hall 1's lack of columns means that events are easy to set up.

It features a 247 sq.m mezzanine that houses technical equipment, and offers a high-speed Internet connection.

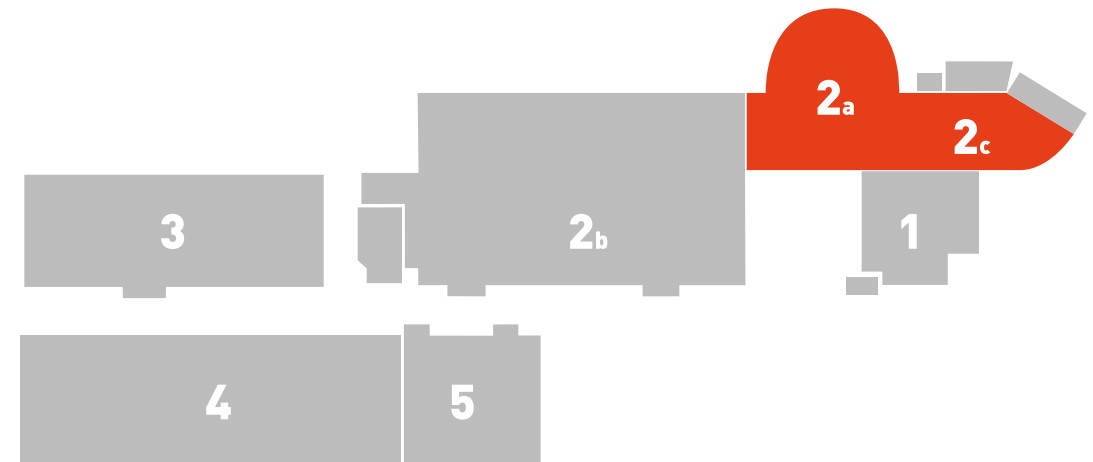
+ ADVANTAGES

- A large-scale entrance door (5 m high x 12 m wide)
- Easily customisable
- No columns

★ PERFECT FOR

- Reception facilities
- Small trade shows

HALLS 2A & 2C



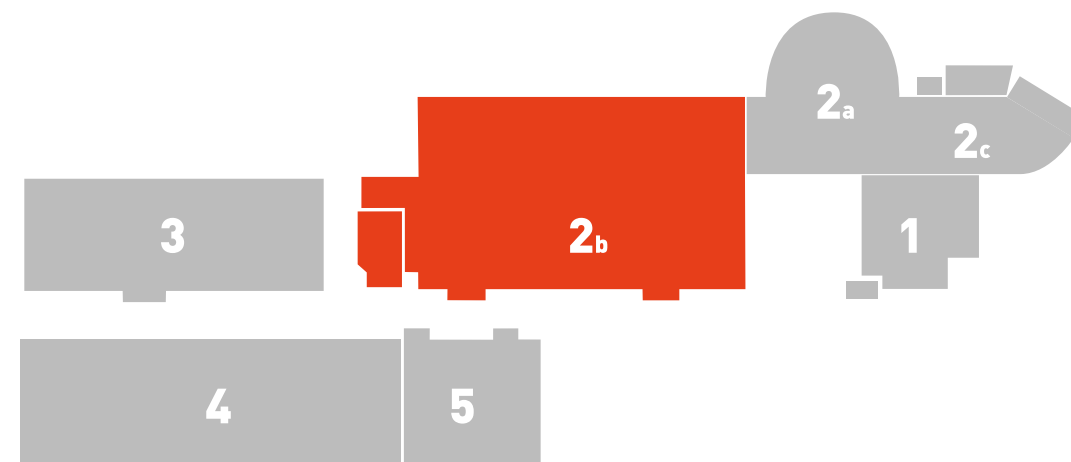
These adjoining halls have a combined surface area of 13,775 sq.m, and each is surrounded by exterior spaces. They are outfitted with a vast sliding door 10 metres high by 40 meters wide, which allow clients a wide range of possibilities. The interior space has only four central columns, which makes elaborate staging possible. With a glazed security entrance located next to the conference centre and the Air and Space Museum, these halls are excellent venues for lively and enjoyable events.

+ ADVANTAGES

- Its contemporary architecture and striking rotunda with dark wood cladding
- Close to entrances and parking areas
- Space can be fully darkened

★ PERFECT FOR

- Events
- Conferences
- Fashion shows
- Concerts



The rectangular shape of this spacious, light-filled room means that it is fully modular.

Connected to Hall 2A by large moveable partitions, this 24,300 sq.m space has an extensive dedicated exterior zone, which can be used as a supplementary exhibition area.

Thanks to Hall 2A's very central location in the complex, visitors can easily access Paris Le Bourget's main restaurant.

Its up-to-date facilities include a number of sanitary facilities, three takeaway food zones and an ATM accessible from the outside façade.

+ ADVANTAGES

- Located at the complex's centre
- Close to visitor parking areas
- Light-filled
- A number of catering options
- Two interior smoking areas

★ PERFECT FOR

- Trade shows for the general public and professionals
- Catering
- Large-scale exhibitions



This free-standing structure has a generous exhibition space of 12,500 sq.m, an ideal compromise between a small and large hall.

With two takeaway food zones, three sanitary facilities and an air-cooling system, this hall can be used independently from the other spaces in the complex.

+ ADVANTAGES

- Close to the Park's entrance (Gate L1) and visitor parking
- Ideal for private events
- Interior smoking area

★ PERFECT FOR

- Trade shows
- Corporate events
- Exhibitions
- Workshops
- Installation of a retail outlet

HALLS 4.1 & 4.2



These two very visible halls offer a combined surface area of 19,500 sq.m : 9,830 sq.m for Hall 4.1 and 9,670 sq.m for Hall 4.2.

They are exceptionally luminous thanks to overhead lighting and a number of light wells. They are separated from Hall 5 by a large moveable partition, which means that the space available for exhibitions can be expanded.

Due to the absence of columns, the halls are extremely modular, and have polished cement floors.

+ ADVANTAGES

- Minimum ceiling height of 7 m
- Customised interior and exterior signage possible
- Exterior exhibition space of 30,000 sq.m for live demonstrations
- Close to visitor parking

★ PERFECT FOR

- Exhibitions
- Trade shows
- Plenary conferences for up to 25,000 guests



Hall 5 is this venue's most recent addition and has a total exhibition area of 5,650 sq.m. Thanks to its cube shape, 11-meter-high ceiling and lack of columns, installations are extremely easy.

A concourse in front of the structure can be used as an exterior reception area, and the façade's signage helps guide visitors.

Hall 5 has two takeaway food zones and an air-cooling system, and can be converted into a more intimate setting. Organisers have the option of fully darkening the entire interior space.

+ ADVANTAGES

- Interior can be fully darkened
- Elegant, contemporary architecture
- Direct access to parking facilities

★ PERFECT FOR

- Product launches
- Exhibitions
- Conferences
- Events

CONFERENCE CENTRE



Paris Le Bourget also has **6 conference rooms** and an auditorium that can hold **up to 200 people**.



ROOM	SIZE
Auditorium	175 sq.m
Salle 1	60 sq.m
Salle 2	70 sq.m
Salle 3	88 sq.m
Salle 4	56 sq.m
Salle 5	48 sq.m
Salle 6	31 sq.m





VIPARIS